

**130 ENVIRONMENTAL PARK
CALDWELL COUNTY, TEXAS
TCEQ PERMIT APPLICATION NO. MSW 2383**

TYPE I PERMIT APPLICATION

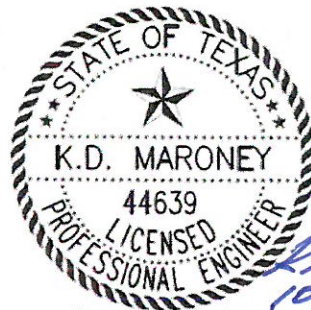
VOLUME 5 OF 5

Prepared for

130 ENVIRONMENTAL PARK, LLC

August 2013
Revised February 2014
Revised June 2014
Revised August 2014
Revised September 2014

Revised October 2014



Biggs & Mathews, Inc.
Firm Registration No. F-834

Prepared by

BIGGS & MATHEWS ENVIRONMENTAL

1700 Robert Road, Suite 100 ♦ Mansfield, Texas 76063 ♦ 817-563-1144

TEXAS BOARD OF PROFESSIONAL ENGINEERS
FIRM REGISTRATION NO. F-256

TEXAS BOARD OF PROFESSIONAL GEOSCIENTISTS
FIRM REGISTRATION NO. 50222

And

BIGGS & MATHEWS, INC.

2500 Brook Avenue ♦ Wichita Falls, Texas 76301 ♦ 940-766-0156

TEXAS BOARD OF PROFESSIONAL ENGINEERS
FIRM REGISTRATION NO. F-834

**130 ENVIRONMENTAL PARK
CALDWELL COUNTY, TEXAS
TCEQ PERMIT APPLICATION NO. MSW 2383**

TYPE I PERMIT APPLICATION

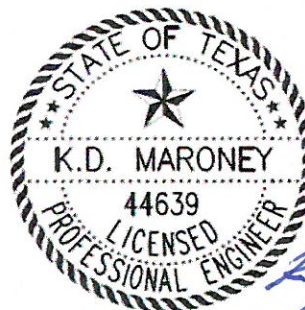
VOLUME 5 OF 5

CONTENTS

PART III FACILITY INVESTIGATION AND DESIGN

Attachment G – Landfill Gas Management Plan
Attachment H – Closure Plan
Attachment I – Postclosure Plan
Attachment J – Cost Estimate for Closure and Postclosure Care

PART IV SITE OPERATING PLAN



Biggs & Mathews, Inc.
Firm Registration No. F-834

K.D. Maroney
10/16/14

**130 ENVIRONMENTAL PARK
CALDWELL COUNTY, TEXAS
TCEQ PERMIT APPLICATION NO. MSW 2383**

TYPE I PERMIT APPLICATION

PART III – FACILITY INVESTIGATION AND DESIGN

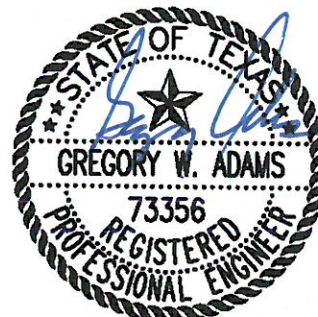
**ATTACHMENT H
CLOSURE PLAN**

Prepared for

130 ENVIRONMENTAL PARK, LLC

February 2014
Revised June 2014
Revised August 2014

Revised October 2014



Biggs & Mathews Environmental, Inc.
Firm Registration No. F-256

10/16/2014

Prepared by

BIGGS & MATHEWS ENVIRONMENTAL

1700 Robert Road, Suite 100 ♦ Mansfield, Texas 76063 ♦ 817-563-1144

TEXAS BOARD OF PROFESSIONAL ENGINEERS
FIRM REGISTRATION NO. F-256

TEXAS BOARD OF PROFESSIONAL GEOSCIENTISTS
FIRM REGISTRATION NO. 50222

And

BIGGS & MATHEWS, INC.

2500 Brook Avenue ♦ Wichita Falls, Texas 76301 ♦ 940-766-0156

TEXAS BOARD OF PROFESSIONAL ENGINEERS
FIRM REGISTRATION NO. F-834

CONTENTS

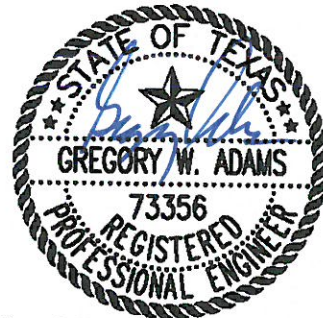
1	INTRODUCTION	H-1
2	FINAL COVER SYSTEM.....	H-2
2.1	Final Cover System Design.....	H-2
2.2	Installation Methods and Procedures	H-2
3	CLOSURE PROCEDURES	H-3
3.1	Closure Sequence	H-3
3.2	Closure During Active Life	H-3
3.2.1	Estimate of Largest Area Requiring Final Cover	H-4
3.2.2	Estimate of Maximum Inventory of Waste On-Site.....	H-4
4	CLOSURE SCHEDULE	H-5
4.1	Final Cover Construction.....	H-5
4.2	Closure of Storage and Transfer Units	H-5
4.3	Final Closure Activities.....	H-6
4.4	Provisions for Extending Closure Period	H-7
5	CLOSURE COST ESTIMATE	H-8

APPENDIX H1 – FIGURES

Figure H1.1 Final Closure Schedule

Figure H1.2 Affidavit to the Public

APPENDIX H2 – FINAL COVER SYSTEM DETAILS



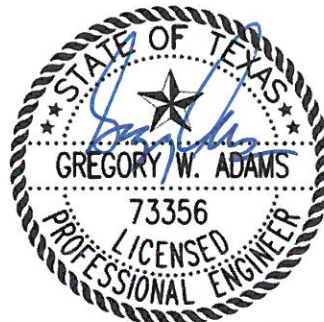
Biggs & Mathews Environmental, Inc.
Firm Registration No. F-256

10/16/2014

130 ENVIRONMENTAL PARK

APPENDIX H2

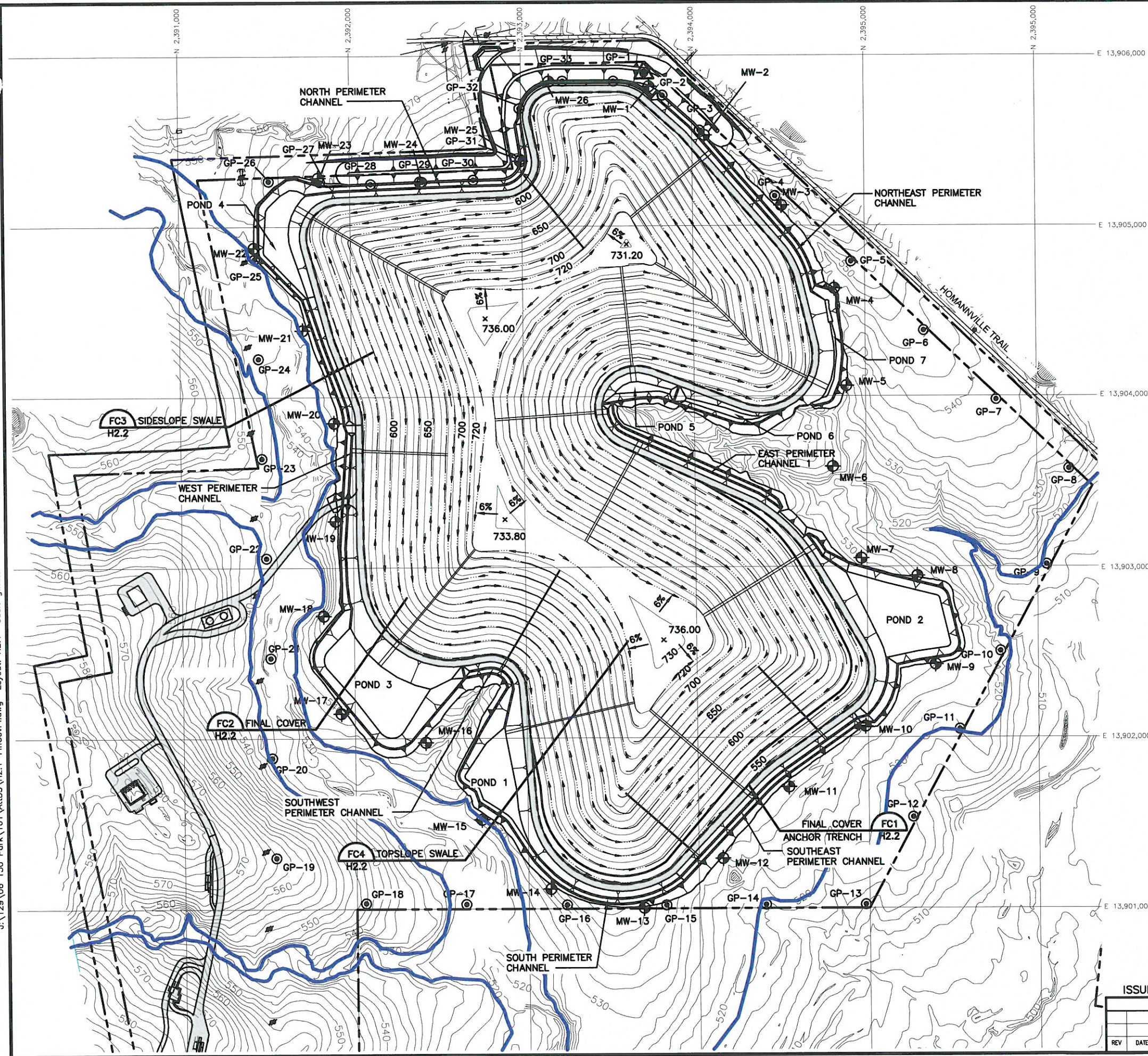
FINAL COVER SYSTEM DETAILS



Biggs & Mathews Environmental, Inc.
Firm Registration No. F-256

10/16/2014

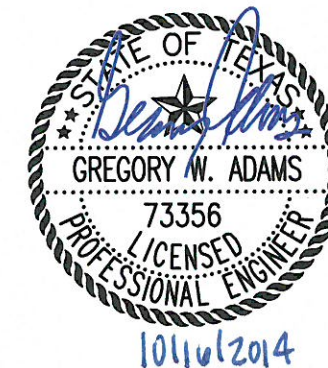
J:\129\06 130 Park\101\H2.1-FinCovPl.dwg Layout: H2.1 User: gwhite



- LEGEND**
- PROPERTY BOUNDARY
 - FACILITY BOUNDARY
 - LANDFILL FOOTPRINT
 - 250 EXISTING CONTOUR
 - 100 YEAR FLOODPLAIN
 - N 6753000 STATE PLANE GRID
 - MW-4 MONITORING WELL
 - GP-1 LFG MONITORING PROBE
 - 600 TOP OF FINAL COVER 10' CONTOUR

NOTES:

1. CONTOURS AND ELEVATIONS PROVIDED BY DALLAS AERIAL SERVICE FROM AERIAL PHOTOGRAPHY FLOWN MAY 13, 2013. HORIZONTAL DATUM IS TEXAS STATE PLANE COORDINATE SYSTEM, SOUTH CENTRAL ZONE (NAD 83). ELEVATIONS ARE RELATIVE TO NAVD88 - GEOID 12A.
2. PROPERTY BOUNDARY, FACILITY BOUNDARY, EASEMENT LOCATIONS, AND PERMANENT BENCHMARK PROVIDED BY HODDE & HODDE LAND SURVEYING, INC.
3. PROPOSED CONTOURS DEPICT TOP OF FINAL COVER.



ISSUED FOR PERMITTING PURPOSES ONLY

REVISIONS						TBPE FIRM NO. F-256		TBPG FIRM NO. 50222	
REV	DATE	DESCRIPTION	DWN BY	DES BY	CHK BY	APP BY	DSN. GWA	DATE : 12/13	DRAWING
							DWN. GLW	SCALE : GRAPHIC	H2.1
							CHK. GWA	DWG : H2.1-FinCovPl.dwg	

FINAL COVER PLAN

130 ENVIRONMENTAL PARK, LLC
130 ENVIRONMENTAL PARK
TYPE I PERMIT APPLICATION



BIGGS & MATHEWS
ENVIRONMENTAL
CONSULTING ENGINEERS

MANSFIELD • WICHITA FALLS
817-563-1144

**130 ENVIRONMENTAL PARK
CALDWELL COUNTY, TEXAS
TCEQ PERMIT APPLICATION NO. MSW 2383**

TYPE I PERMIT APPLICATION

PART III – FACILITY INVESTIGATION AND DESIGN

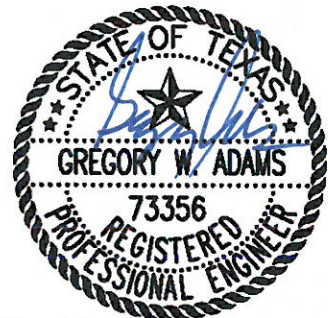
**ATTACHMENT I
POSTCLOSURE PLAN**

Prepared for

130 ENVIRONMENTAL PARK, LLC

February 2014
Revised June 2014

Revised October 2014



Biggs & Mathews Environmental, Inc.
Firm Registration No. F-256

Prepared by

10/16/2014

BIGGS & MATHEWS ENVIRONMENTAL

1700 Robert Road, Suite 100 ♦ Mansfield, Texas 76063 ♦ 817-563-1144

TEXAS BOARD OF PROFESSIONAL ENGINEERS
FIRM REGISTRATION NO. F-256

TEXAS BOARD OF PROFESSIONAL GEOSCIENTISTS
FIRM REGISTRATION NO. 50222

And

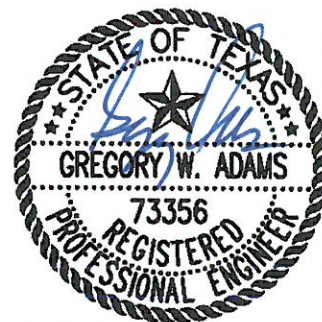
BIGGS & MATHEWS, INC.

2500 Brook Avenue ♦ Wichita Falls, Texas 76301 ♦ 940-766-0156

TEXAS BOARD OF PROFESSIONAL ENGINEERS
FIRM REGISTRATION NO. F-834

CONTENTS

1	INTRODUCTION	I-1
2	POSTCLOSURE CARE ACTIVITIES	I-2
2.1	Monitoring and Maintenance	I-2
2.2	Decreasing Postclosure Care Period	I-3
2.3	Increasing Postclosure Care Period	I-3
2.4	Completion of Postclosure Care	I-3
3	PERSON RESPONSIBLE FOR CONDUCTING POSTCLOSURE CARE ACTIVITIES	I-4
4	POSTCLOSURE LAND USE	I-5
4.1	Intended Use	I-5
4.2	Constraints on Postclosure Construction	I-5
5	POSTCLOSURE CARE COST ESTIMATE	I-6



Biggs & Mathews Environmental, Inc.
Firm Registration No. F-256

10/16/2014

3 PERSON RESPONSIBLE FOR CONDUCTING POSTCLOSURE CARE ACTIVITIES

30 TAC §330.463(b)

The office overseeing and/or conducting postclosure care is:

~~132-134~~ Riverstone Terrace
Suite ~~403~~203
Canton, GA 30114
770-720-2717

5 POSTCLOSURE CARE COST ESTIMATE

30 TAC §330.463(b)

The estimated cost of hiring a third party to conduct postclosure care activities in accordance with the postclosure plan is ~~\$6,794,348~~~~\$6,715,148~~. The detailed cost estimate provided in Part III, Attachment J – Cost Estimates for Closure and Postclosure Care.

**130 ENVIRONMENTAL PARK
CALDWELL COUNTY, TEXAS
TCEQ PERMIT APPLICATION NO. MSW 2383**

TYPE I PERMIT APPLICATION

PART III – FACILITY INVESTIGATION AND DESIGN

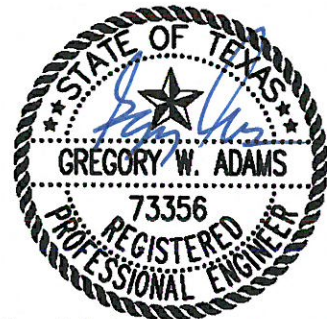
**ATTACHMENT J
COST ESTIMATES FOR CLOSURE AND POSTCLOSURE CARE**

Prepared for

130 ENVIRONMENTAL PARK, LLC

February 2014
Revised June 2014
Revised August 2014

Revised October 2014



Biggs & Mathews Environmental, Inc.
Firm Registration No. F-256

Prepared by

BIGGS & MATHEWS ENVIRONMENTAL

1700 Robert Road, Suite 100 ♦ Mansfield, Texas 76063 ♦ 817-563-1144

TEXAS BOARD OF PROFESSIONAL ENGINEERS
FIRM REGISTRATION NO. F-256

TEXAS BOARD OF PROFESSIONAL GEOSCIENTISTS
FIRM REGISTRATION NO. 50222

And

BIGGS & MATHEWS, INC.

2500 Brook Avenue ♦ Wichita Falls, Texas 76301 ♦ 940-766-0156

TEXAS BOARD OF PROFESSIONAL ENGINEERS
FIRM REGISTRATION NO. F-834

CONTENTS

LIST OF TABLES AND FIGURES.....	J-iii
1 INTRODUCTION	J-1
2 CLOSURE COST ESTIMATE	J-2
3 POSTCLOSURE CARE COST ESTIMATE.....	J-3
4 COST ESTIMATE ADJUSTMENTS	J-4
5 FINANCIAL ASSURANCE.....	J-5

APPENDIX J1

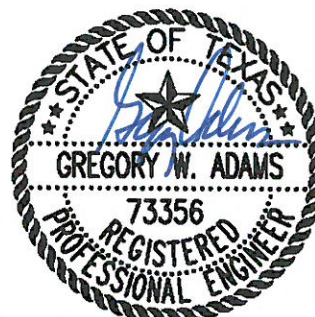
Closure Cost Estimate Calculations

APPENDIX J2

Postclosure Care Cost Estimate Calculations

APPENDIX J3

Evidence of Financial Assurance



Biggs & Mathews Environmental, Inc.
Firm Registration No. F-256

10/16/2014

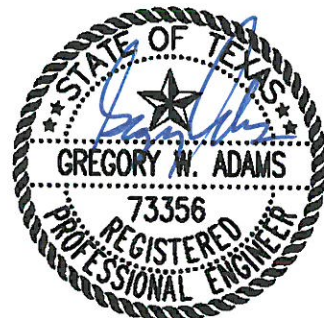
LIST OF TABLES AND FIGURES

TABLES

- J-1 Closure Cost Estimate
- J-2 Postclosure Care Cost Estimate

DRAWINGS

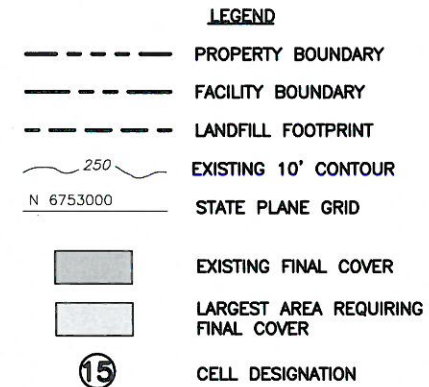
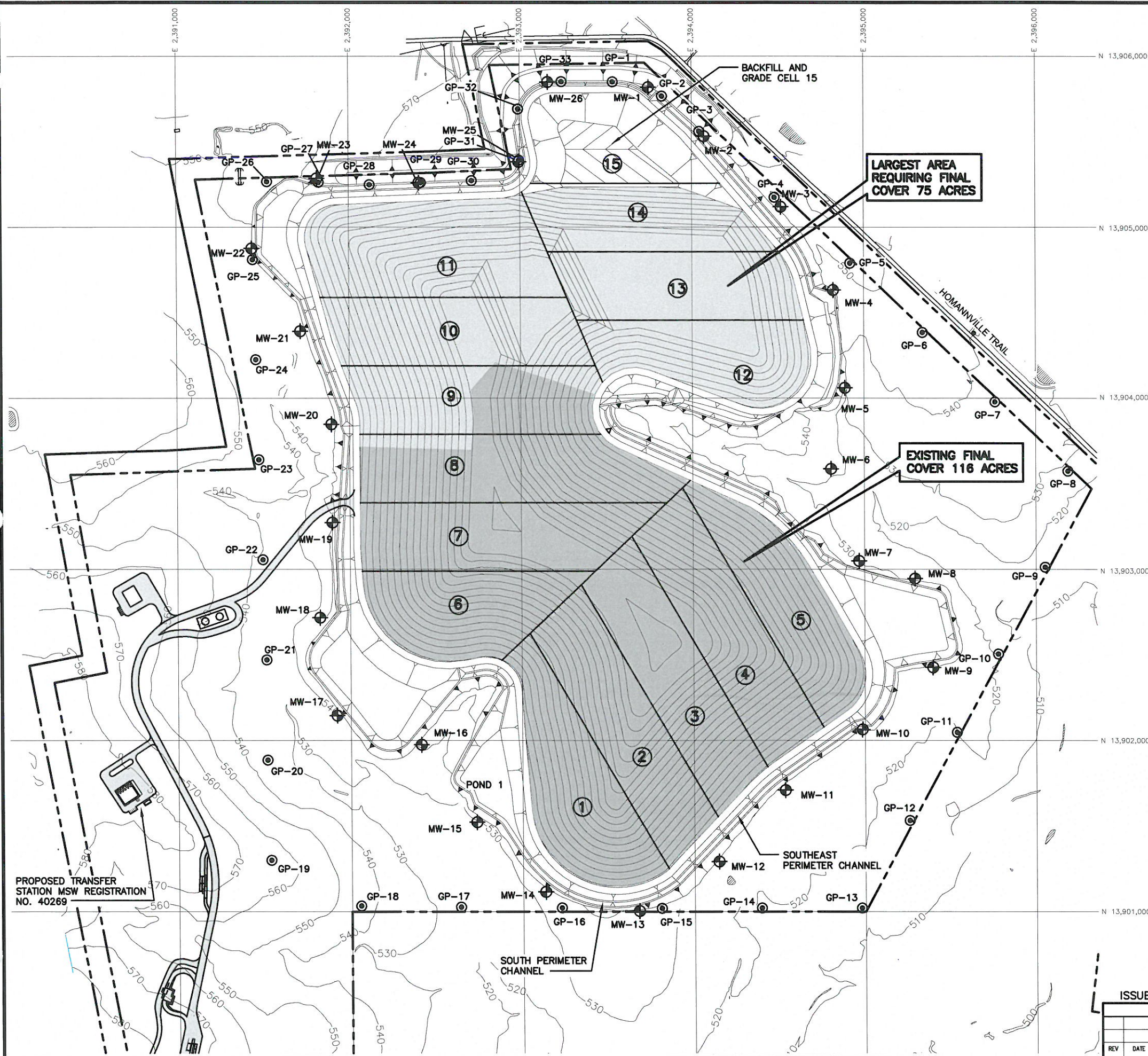
- J.1 Largest Area Requiring Final Closure



Biggs & Mathews Environmental, Inc.
Firm Registration No. F-256

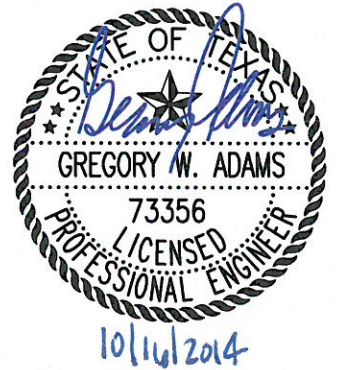
10/16/2014

J:\129\06 130 Park\101\Attu\LARFC.dwg Layout: 6seq User: gwhite



NOTES:

1. CONTOURS AND ELEVATIONS PROVIDED BY DALLAS AERIAL SERVICE FROM AERIAL PHOTOGRAPHY FLOWN MAY 13, 2013. HORIZONTAL DATUM IS TEXAS STATE PLANE COORDINATE SYSTEM, SOUTH CENTRAL ZONE (NAD 83). ELEVATIONS ARE RELATIVE TO NAVD88 - GEOID 12A.
2. PROPERTY BOUNDARY, FACILITY BOUNDARY, EASEMENT LOCATIONS, AND PERMANENT BENCHMARK PROVIDED BY HODDE & HODDE LAND SURVEYING, INC



LAREST AREA REQUIRING FINAL CLOSURE
130 ENVIRONMENTAL PARK, LLC
130 ENVIRONMENTAL PARK
TYPE I PERMIT APPLICATION



BIGGS & MATHEWS
CONSULTING ENGINEERS
MANSFIELD • WICHITA FALLS
817-563-1144

ISSUED FOR PERMITTING PURPOSES ONLY

REVISIONS							TBPE FIRM NO. F-256		TBPG FIRM NO. 50222		DRAWING J.1
DSN.	KDM	DATE : 12/13					CHK.	gwa	DWG : LARFC.dwg		
DWN.	GLW	SCALE : GRAPHIC									
REV	DATE	DESCRIPTION	DWN BY	DES BY	CHK BY	APP BY					

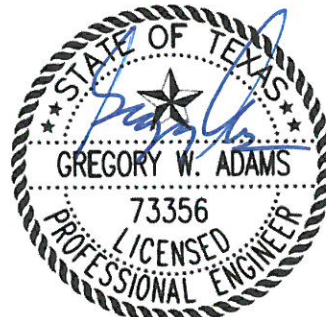
Table J-2
Postclosure Care Cost Estimate

No.	ITEM	ANNUAL COST
1.0	Engineering Costs	\$ 95,840.00
2.0	Construction / Maintenance Costs	\$ 30,178.00
3.0	Leachate Disposal Costs	\$ 13,575.00
4.0	Landfill Gas Management Costs	\$ 47,750.00
	Subtotal	\$ 187,343.00
	10% Contingency	\$ 18,734.30
5.0	Administration	\$ 18,734.30
	Annual Postclosure Costs	\$ 224,811.60
	Closure of Leachate Storage Facility	\$ 50,000.00
	Total Postclosure Costs	\$ 6,794,348.00

*This postclosure cost estimate was developed in 2014 dollars.

130 ENVIRONMENTAL PARK

APPENDIX J2 POSTCLOSURE CARE COST ESTIMATE CALCULATIONS



Biggs & Mathews Environmental, Inc.
Firm Registration No. F-256

10/16/2014

Includes pages J2-1 through J2-3

130 Environmental Park

POSTCLOSURE COST ESTIMATE

Required: Estimate the cost to hire a third party to conduct postclosure care activities.

References: 1. Texas Natural Resources Conservation Commission, *Cost Estimate Handbook for Closure and Postclosure Care*, Version 1, August 1993.

Solution:

Postclosure care period =	30 years
Permit area =	520 acres
Waste footprint ¹ =	191 acres
Number of monitor wells =	26 wells
Number of gas probes and buildings =	36 probes

No.	ITEM	ANNUAL QTY	UNIT	UNIT COST	TOTAL COST
1.0	Engineering Costs				
1.1	Postclosure Plan	NA	LS	NA	\$ -
1.2	Site Inspections	520	ac	\$ 25.00	\$ 13,000.00
1.3	Correctional Plan and Specifications	191	ac	\$ 40.00	\$ 7,640.00
1.4.1	Groundwater Monitoring	52	event	\$ 1,100.00	\$ 57,200.00
1.4.2	Landfill Gas Monitoring	144	event	\$ 125.00	\$ 18,000.00
2.0	Construction / Maintenance Costs	191	ac	\$ 158.00	\$ 30,178.00
3.0	Leachate Disposal	271,500	gal	\$ 0.05	\$ 13,575.00
4.0	Landfill Gas Management	191	ac	\$ 250.00	\$ 47,750.00
	Subtotal				\$ 187,343.00
	Contingency	10	%		\$ 18,734.30
5.0	Administration	10	%		\$ 18,734.30
	Annual Postclosure Cost				\$ 224,811.60
	Closure of Leachate Storage Facility	1	LS	\$ 50,000.00	\$ 50,000.00
	Total Postclosure Cost				\$ 6,794,348.00

*This postclosure cost estimate was developed in 2014 dollars.

¹The waste footprint includes the final cover in place and largest area requiring final closure.