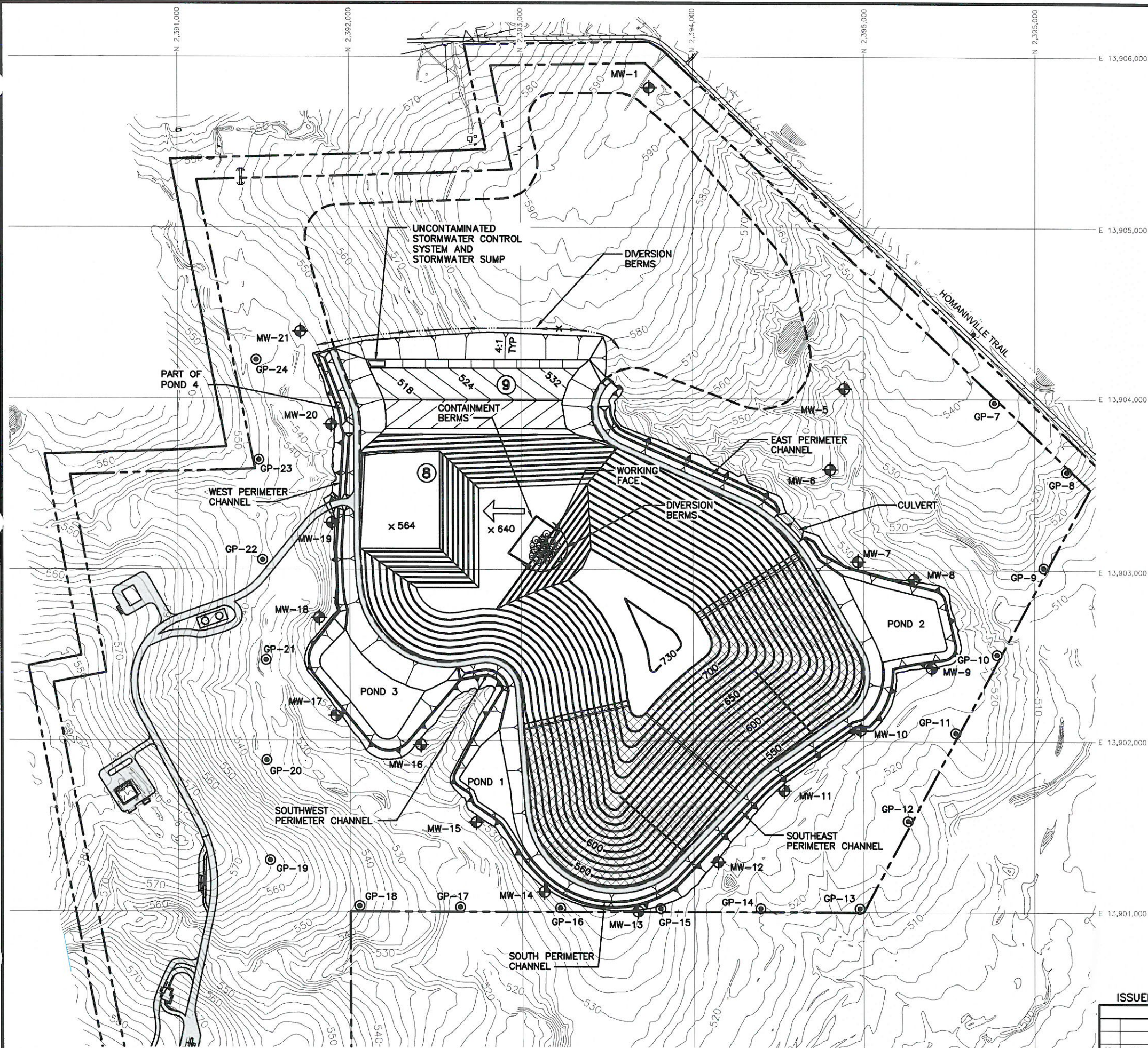


J:\129\06 130 Park\102\PART I\IA.18-Cell8Dev.dwg Layout: IIA.18 User: gwhite

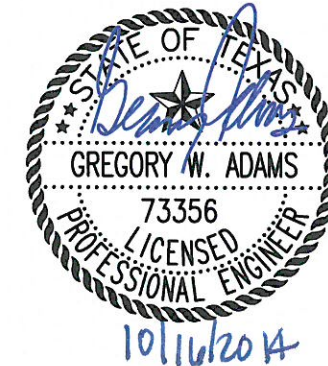


- LEGEND**
- PROPERTY BOUNDARY
 - FACILITY BOUNDARY
 - LANDFILL FOOTPRINT
 - 250 --- EXISTING CONTOUR
 - N 6753000 STATE PLANE GRID
 - MW-4 MONITORING WELL
 - GP-1 LFG MONITORING PROBE
 - ➔ DIRECTION OF FILL
 - 630 x APPROXIMATE TOP OF WASTE SPOT ELEVATION



NOTES:

1. CONTOURS AND ELEVATIONS PROVIDED BY DALLAS AERIAL SERVICE FROM AERIAL PHOTOGRAPHY FLOWN MAY 13, 2013. HORIZONTAL DATUM IS TEXAS STATE PLANE COORDINATE SYSTEM, SOUTH CENTRAL ZONE (NAD 83). ELEVATIONS ARE RELATIVE TO NAVD88 - GEOID 12A.
2. PROPERTY BOUNDARY, FACILITY BOUNDARY, EASEMENT LOCATIONS, AND PERMANENT BENCHMARK PROVIDED BY HODDE & HODDE LAND SURVEYING, INC
3. THE LANDFILL ACCESS AND HAUL ROADS WILL BE SURFACED TO PROVIDE ALL WEATHER ACCESS. ROAD LOCATIONS TO BE DETERMINED DURING SITE OPERATIONS AND LOCATIONS WILL VARY.
4. THE RUN-ON STORMWATER CONTROL SYSTEM WILL CONSIST OF THE PERIMETER DRAINAGE CHANNEL, RUN-ON STORMWATER DIVERSION BERM, AND UNCONTAMINATED STORMWATER SUMP.
5. REFER TO PART III, ATTACHMENT C-DRAINAGE DESIGN REPORT FOR STORMWATER SYSTEMS AND EROSION AND SEDIMENT CONTROL PLAN. REFER TO PART III, ATTACHMENT D6-LEACHATE AND CONTAMINATED WATER MANAGEMENT PLAN FOR CONTAINMENT AND DIVERSION BERM CALCULATIONS.
6. UNCONTAMINATED STORMWATER COLLECTED IN SUMPS WILL BE PERIODICALLY REMOVED FROM EXCAVATED AREAS BY PUMPING TO PERIMETER DRAINAGE CHANNELS OR USED IN SITE OPERATIONS (DUST CONTROL, IRRIGATIONS, ROAD AND LINER CONSTRUCTION).
7. CELL 8 DEVELOPMENT DEPICTS ONGOING WASTE DISPOSAL OPERATIONS IN CELL 8 TO MAXIMUM FILL ELEVATION. EXCAVATION AND LINER CONSTRUCTION ONGOING IN CELL 9.
8. MONITORING WELLS AND PROBES TO BE INSTALLED AS SHOWN ON DRAWING IIA.14.



ISSUED FOR PERMITTING PURPOSES ONLY

REVISIONS						TBPE FIRM NO. F-256		TBPG FIRM NO. 50222	
REV	DATE	DESCRIPTION	DWN BY	DES BY	CHK BY	APP BY	DSN. KDM	DATE : 12/13	DRAWING
							DWN. GLW	SCALE : GRAPHIC	
							CHK. KDM	DWG : IIA.18-Cell8Dev.dwg	IIA.18

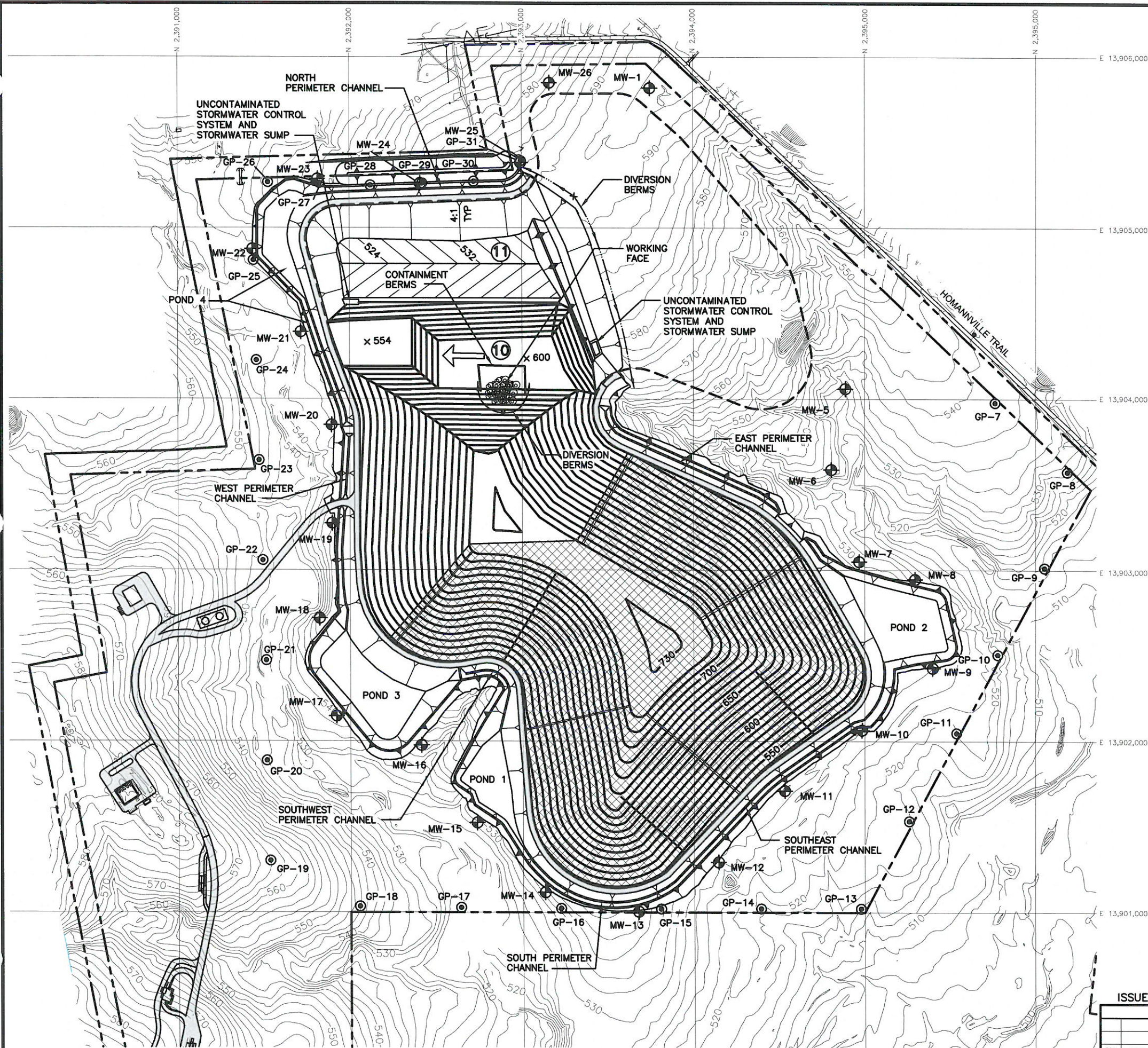
CELL 8 DEVELOPMENT

130 ENVIRONMENTAL PARK, LLC
130 ENVIRONMENTAL PARK
TYPE I PERMIT APPLICATION



BIGGS & MATHEWS
ENVIRONMENTAL
CONSULTING ENGINEERS
MANSFIELD • WICHITA FALLS
817-563-1144

J:\129\06 130 Park\102\PART I\IA.19-Cell10Dev.dwg Layout: IIA.19 User: gwhite

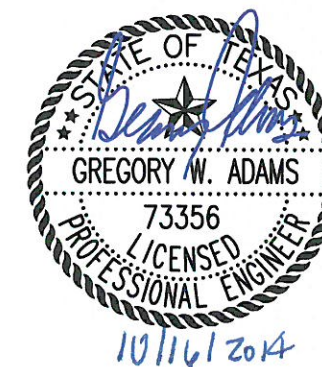


- LEGEND**
- PROPERTY BOUNDARY
 - FACILITY BOUNDARY
 - LANDFILL FOOTPRINT
 - 250 EXISTING CONTOUR
 - N 6753000 STATE PLANE GRID
 - MW-4 MONITORING WELL
 - GP-1 LFG MONITORING PROBE
 - DIRECTION OF FILL
 - 630 x APPROXIMATE TOP OF WASTE SPOT ELEVATION

0 300 600
SCALE IN FEET

NOTES:

1. CONTOURS AND ELEVATIONS PROVIDED BY DALLAS AERIAL SERVICE FROM AERIAL PHOTOGRAPHY FLOWN MAY 13, 2013. HORIZONTAL DATUM IS TEXAS STATE PLANE COORDINATE SYSTEM, SOUTH CENTRAL ZONE (NAD 83). ELEVATIONS ARE RELATIVE TO NAVD88 - GEOID 12A.
2. PROPERTY BOUNDARY, FACILITY BOUNDARY, EASEMENT LOCATIONS, AND PERMANENT BENCHMARK PROVIDED BY HODDE & HODDE LAND SURVEYING, INC
3. THE LANDFILL ACCESS AND HAUL ROADS WILL BE SURFACED TO PROVIDE ALL WEATHER ACCESS. ROAD LOCATIONS TO BE DETERMINED DURING SITE OPERATIONS AND LOCATIONS WILL VARY.
4. THE RUN-ON STORMWATER CONTROL SYSTEM WILL CONSIST OF THE PERIMETER DRAINAGE CHANNEL, RUN-ON STORMWATER DIVERSION BERM, AND UNCONTAMINATED STORMWATER SUMP.
5. REFER TO PART III, ATTACHMENT C-DRAINAGE DESIGN REPORT FOR STORMWATER SYSTEMS AND EROSION AND SEDIMENT CONTROL PLAN. REFER TO PART III, ATTACHMENT D6-LEACHATE AND CONTAMINATED WATER MANAGEMENT PLAN FOR CONTAINMENT AND DIVERSION BERM CALCULATIONS.
6. UNCONTAMINATED STORMWATER COLLECTED IN SUMPS WILL BE PERIODICALLY REMOVED FROM EXCAVATED AREAS BY PUMPING TO PERIMETER DRAINAGE CHANNELS OR USED IN SITE OPERATIONS (DUST CONTROL, IRRIGATIONS, ROAD AND LINER CONSTRUCTION).
7. CELL 10 DEVELOPMENT DEPICTS ONGOING WASTE DISPOSAL OPERATIONS IN CELL 10 TO MAXIMUM WASTE FILL ELEVATION. EXCAVATION AND LINER CONSTRUCTION ONGOING IN CELL 11.
8. MONITORING WELLS AND PROBES TO BE INSTALLED AS SHOWN ON DRAWING IIA.14.



ISSUED FOR PERMITTING PURPOSES ONLY

REVISIONS					
REV	DATE	DESCRIPTION	DWN BY	DES BY	CHK BY

CELL 10 DEVELOPMENT

130 ENVIRONMENTAL PARK, LLC
130 ENVIRONMENTAL PARK
TYPE I PERMIT APPLICATION

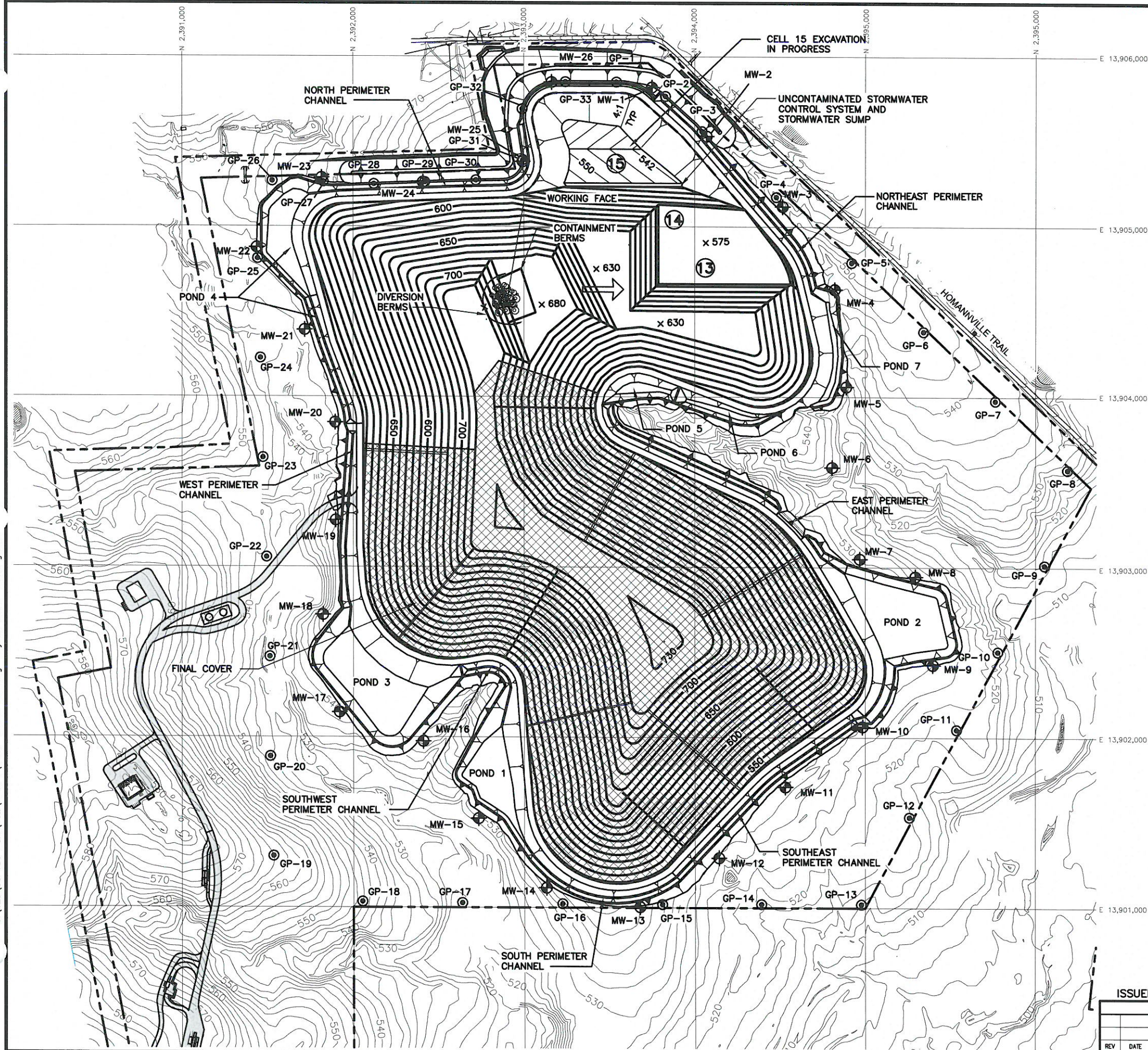


BIGGS & MATHEWS
ENVIRONMENTAL
CONSULTING ENGINEERS
MANSFIELD • WICHITA FALLS
817-563-1144

TBPE FIRM NO. F-256 TBPG FIRM NO. 50222

DSN. KDM	DATE : 12/13	DRAWING IIA.19
DWN. GLW	SCALE : GRAPHIC	
CHK. KDM	DWG : IIA.19-Cell10Dev.dwg	

J:\129\06 130 Park\102\PART I\IA.20-Cell1314Dev.dwg Layout: IIA.20 User: gwhite

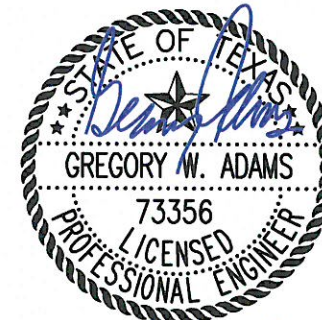


- LEGEND**
- PROPERTY BOUNDARY
 - FACILITY BOUNDARY
 - LANDFILL FOOTPRINT
 - 250 EXISTING CONTOUR
 - N 6753000 STATE PLANE GRID
 - MW-4 MONITORING WELL
 - GP-1 LFG MONITORING PROBE
 - DIRECTION OF FILL
 - 630 x APPROXIMATE TOP OF WASTE SPOT ELEVATION
 - APPROXIMATE LIMITS OF FINAL COVER

0 300 600
SCALE IN FEET

NOTES:

1. CONTOURS AND ELEVATIONS PROVIDED BY DALLAS AERIAL SERVICE FROM AERIAL PHOTOGRAPHY FLOWN MAY 13, 2013. HORIZONTAL DATUM IS TEXAS STATE PLANE COORDINATE SYSTEM, SOUTH CENTRAL ZONE (NAD 83). ELEVATIONS ARE RELATIVE TO NAVD88 - GEOID 12A.
2. PROPERTY BOUNDARY, FACILITY BOUNDARY, EASEMENT LOCATIONS, AND PERMANENT BENCHMARK PROVIDED BY HODDE & HODDE LAND SURVEYING, INC
3. THE LANDFILL ACCESS AND HAUL ROADS WILL BE SURFACED TO PROVIDE ALL WEATHER ACCESS. ROAD LOCATIONS TO BE DETERMINED DURING SITE OPERATIONS AND LOCATIONS WILL VARY.
4. THE RUN-ON STORMWATER CONTROL SYSTEM WILL CONSIST OF THE PERIMETER DRAINAGE CHANNEL, RUN-ON STORMWATER DIVERSION BERM, AND UNCONTAMINATED STORMWATER SUMP.
5. REFER TO PART III, ATTACHMENT C-DRAINAGE DESIGN REPORT FOR STORMWATER SYSTEMS AND EROSION AND SEDIMENT CONTROL PLAN. REFER TO PART III, ATTACHMENT D6-LEACHATE AND CONTAMINATED WATER MANAGEMENT PLAN FOR CONTAINMENT AND DIVERSION BERM CALCULATIONS.
6. UNCONTAMINATED STORMWATER COLLECTED IN SUMPS WILL BE PERIODICALLY REMOVED FROM EXCAVATED AREAS BY PUMPING TO PERIMETER DRAINAGE CHANNELS OR USED IN SITE OPERATIONS (DUST CONTROL, IRRIGATIONS, ROAD AND LINER CONSTRUCTION).
7. CELLS 13 AND 14 DEVELOPMENT DEPICTS ONGOING WASTE DISPOSAL OPERATIONS IN CELLS 13 AND 14 TO MAXIMUM WASTE FILL ELEVATION. EXCAVATION AND LINER CONSTRUCTION ONGOING IN CELL 15.
8. MONITORING WELLS AND PROBES TO BE INSTALLED AS SHOWN ON DRAWING IIA.14.



10/16/2014

ISSUED FOR PERMITTING PURPOSES ONLY

REVISIONS						TBPE FIRM NO. F-256		TBPG FIRM NO. 50222	
REV	DATE	DESCRIPTION	DWN BY	DES BY	CHK BY	APP BY	DSN. KDM	DATE : 12/13	DRAWING
							DWN. GLW	SCALE : GRAPHIC	IIA.20
							CHK. LDM	DWG : IIA.20-Cell1314Dev.dwg	

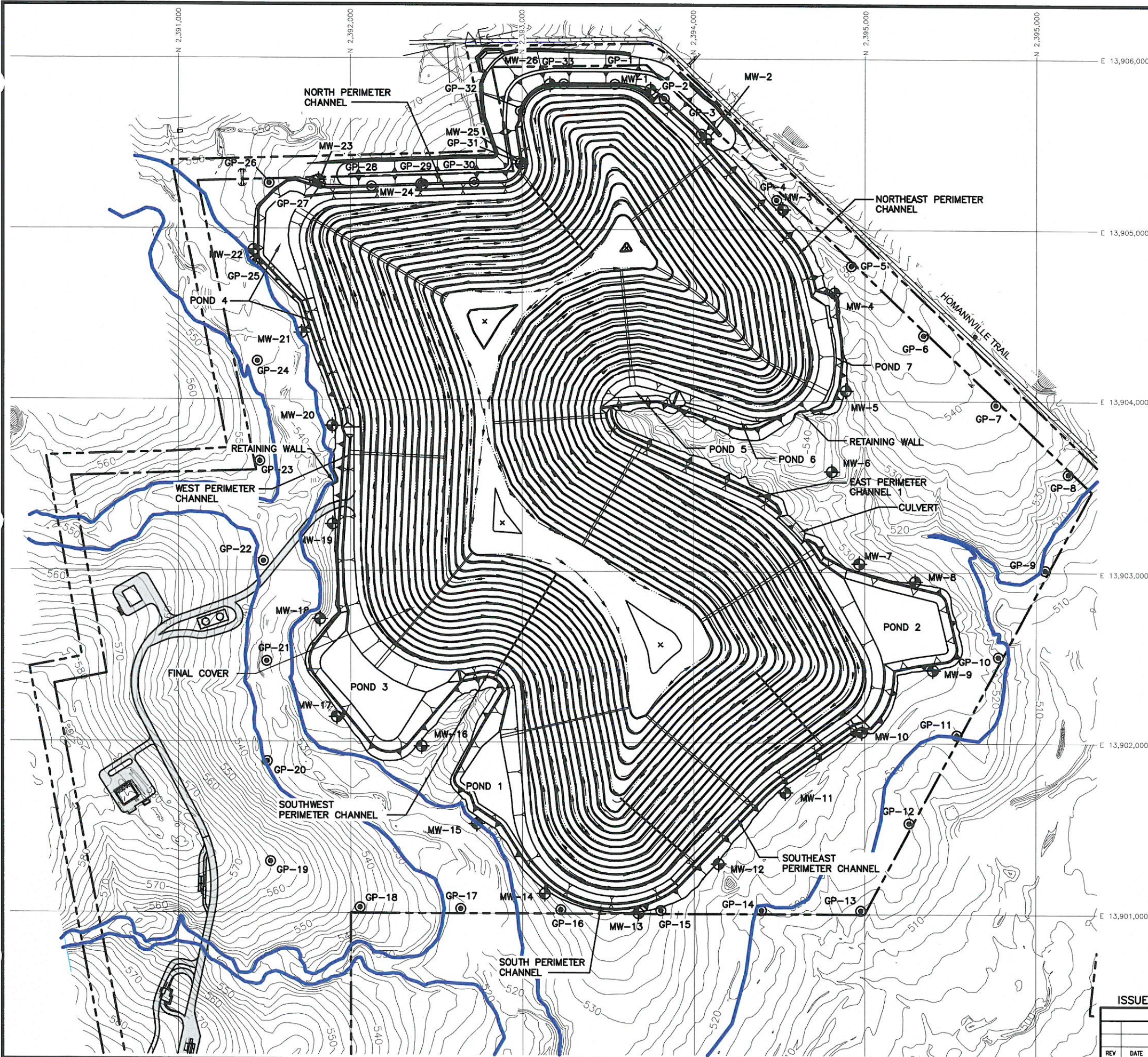
CELLS 13 AND 14 DEVELOPMENT

130 ENVIRONMENTAL PARK, LLC
130 ENVIRONMENTAL PARK
TYPE I PERMIT APPLICATION



BIGGS & MATHEWS
ENVIRONMENTAL
CONSULTING ENGINEERS
MANSFIELD • WICHITA FALLS
817-563-1144

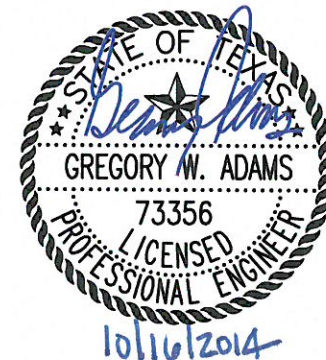
J:\129\06 130 Park\102\PART I\IA.21-LandComp.dwg Layout: IIA.21 User: gwhite



- LEGEND**
- PROPERTY BOUNDARY
 - FACILITY BOUNDARY
 - LANDFILL FOOTPRINT
 - 250 --- EXISTING CONTOUR
 - 100 YEAR FLOODPLAIN
 - N 6753000 STATE PLANE GRID
 - MW-4 MONITORING WELL
 - GP-1 LFG MONITORING PROBE

NOTES:

1. CONTOURS AND ELEVATIONS PROVIDED BY DALLAS AERIAL SERVICE FROM AERIAL PHOTOGRAPHY FLOWN MAY 13, 2013. HORIZONTAL DATUM IS TEXAS STATE PLANE COORDINATE SYSTEM, SOUTH CENTRAL ZONE (NAD 83). ELEVATIONS ARE RELATIVE TO NAVD88 - GEOID 12A.
2. PROPERTY BOUNDARY, FACILITY BOUNDARY, EASEMENT LOCATIONS, AND PERMANENT BENCHMARK PROVIDED BY HODDE & HODDE LAND SURVEYING, INC.
3. REFER TO PART III, ATTACHMENT C - DRAINAGE DESIGN REPORT FOR STORMWATER SYSTEMS AND EROSION AND SEDIMENT CONTROL PLAN.
4. REFER TO PART III, ATTACHMENT C2 - FLOOD CONTROL STUDY FOR FLOODPLAIN MODELING TO DETERMINE LIMITS OF 100 - YEAR FLOODPLAIN.



ISSUED FOR PERMITTING PURPOSES ONLY

REVISIONS							TBPE FIRM NO. F-256		TBPG FIRM NO. 50222	
							DSN. KDM	DATE : 12/13	DRAWING IIA.21	
							DWN. GLW	SCALE : GRAPHIC		
REV	DATE	DESCRIPTION	DWN BY	DES BY	CHK BY	APP BY	CHK. LDM	DWG : IIA.21-LandComp.dwg		

LANDFILL COMPLETION PLAN

**130 ENVIRONMENTAL PARK, LLC
130 ENVIRONMENTAL PARK
TYPE I PERMIT APPLICATION**



**BIGGS & MATHEWS
ENVIRONMENTAL
CONSULTING ENGINEERS**
MANSFIELD • WICHITA FALLS
817-563-1144

**DRAWING
IIA.21**