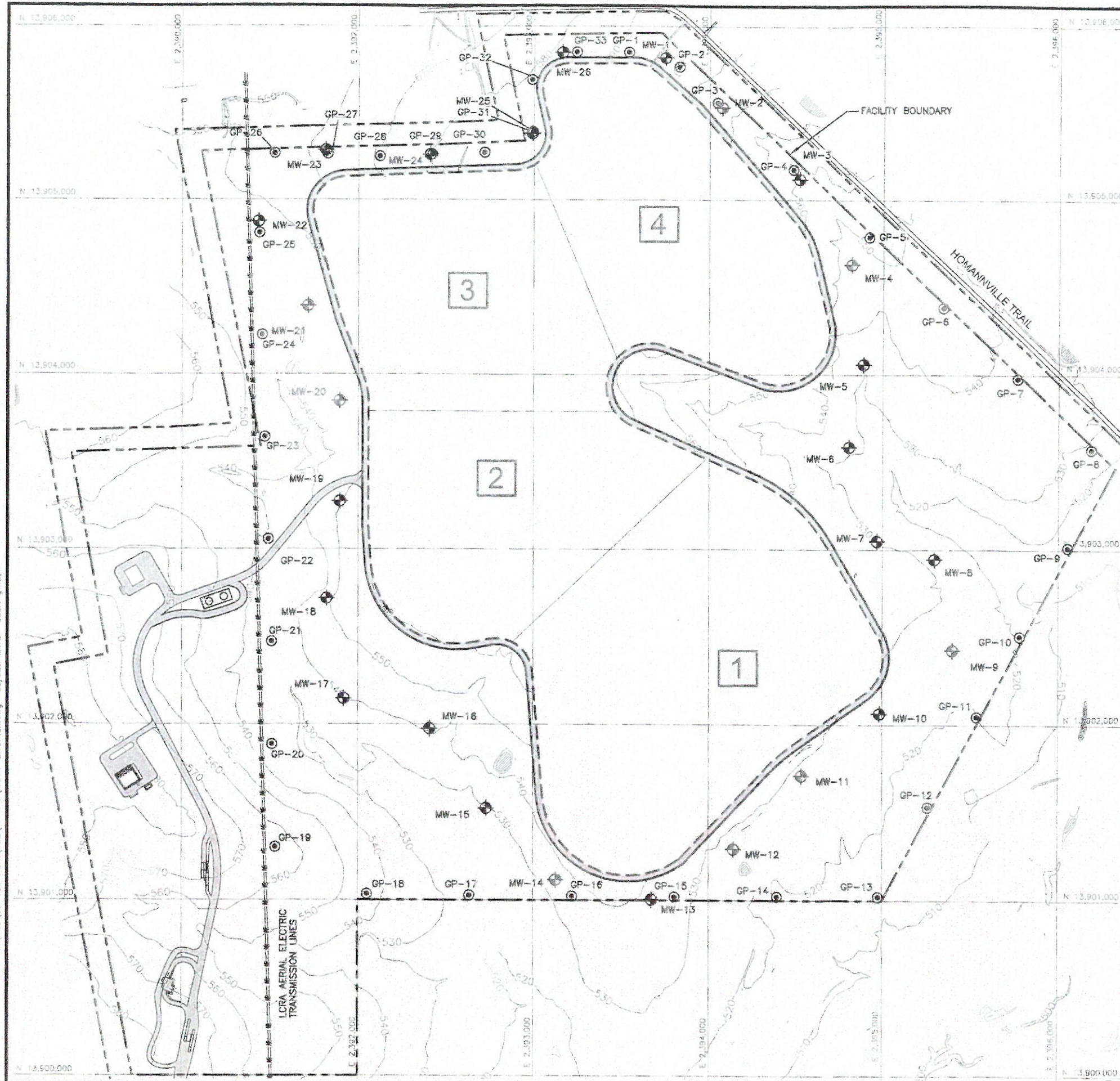


130 ENVIRONMENTAL PARK

**APPENDIX IIA
MAPS AND DRAWINGS**

J:\129\06 130 Park\102\PART I\14-GWPlan.dwg Layout: IIA13 User: gwhite



0 300 600
SCALE IN FEET

LEGEND

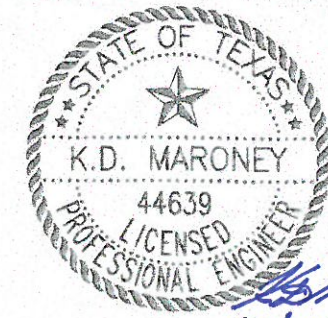
- PROPERTY BOUNDARY
- FACILITY BOUNDARY
- LANDFILL FOOTPRINT
- EXISTING 10' CONTOUR
- STATE PLANE GRID
- EASEMENT
- MW-4 PROPOSED MONITORING WELL
- GP-6 PROPOSED GAS PROBE

1 PHASE DESIGNATION

NOTES:

1. CONTOURS AND ELEVATIONS PROVIDED BY DALLAS AERIAL SERVICE FROM AERIAL PHOTOGRAPHY FLOWN MAY 13, 2013. HORIZONTAL DATUM IS TEXAS STATE PLANE COORDINATE SYSTEM, SOUTH CENTRAL ZONE (NAD 83). ELEVATIONS ARE RELATIVE TO NAVD88 - GEOID 12A.
2. PROPERTY BOUNDARY, FACILITY BOUNDARY, EASEMENT LOCATIONS, AND PERMANENT BENCHMARK PROVIDED BY HODDE & HODDE LAND SURVEYING, INC.
3. REFER TO PART III, ATTACHMENT F - GROUNDWATER CHARACTERIZATION REPORT FOR DESIGN OF GROUNDWATER MONITORING WELLS.
4. REFER TO PART III, ATTACHMENT G - LANDFILL GAS MANAGEMENT PLAN FOR DESIGN OF GAS MONITORING PROBES.

MONITORING INSTALLATION SCHEDULE		
PHASE 1	MW-1, MW-5 THROUGH MW-17	GP-7 THROUGH GP-21
PHASE 2	MW-18 THROUGH MW-21	GP-22 THROUGH GP-24
PHASE 3	MW-22 THROUGH MW-26	GP-25 THROUGH GP-31
PHASE 4	MW-2 THROUGH MW-5	GP-32 AND GP-33, GP-1 THROUGH GP-6



K.D. Maroney
10/16/14

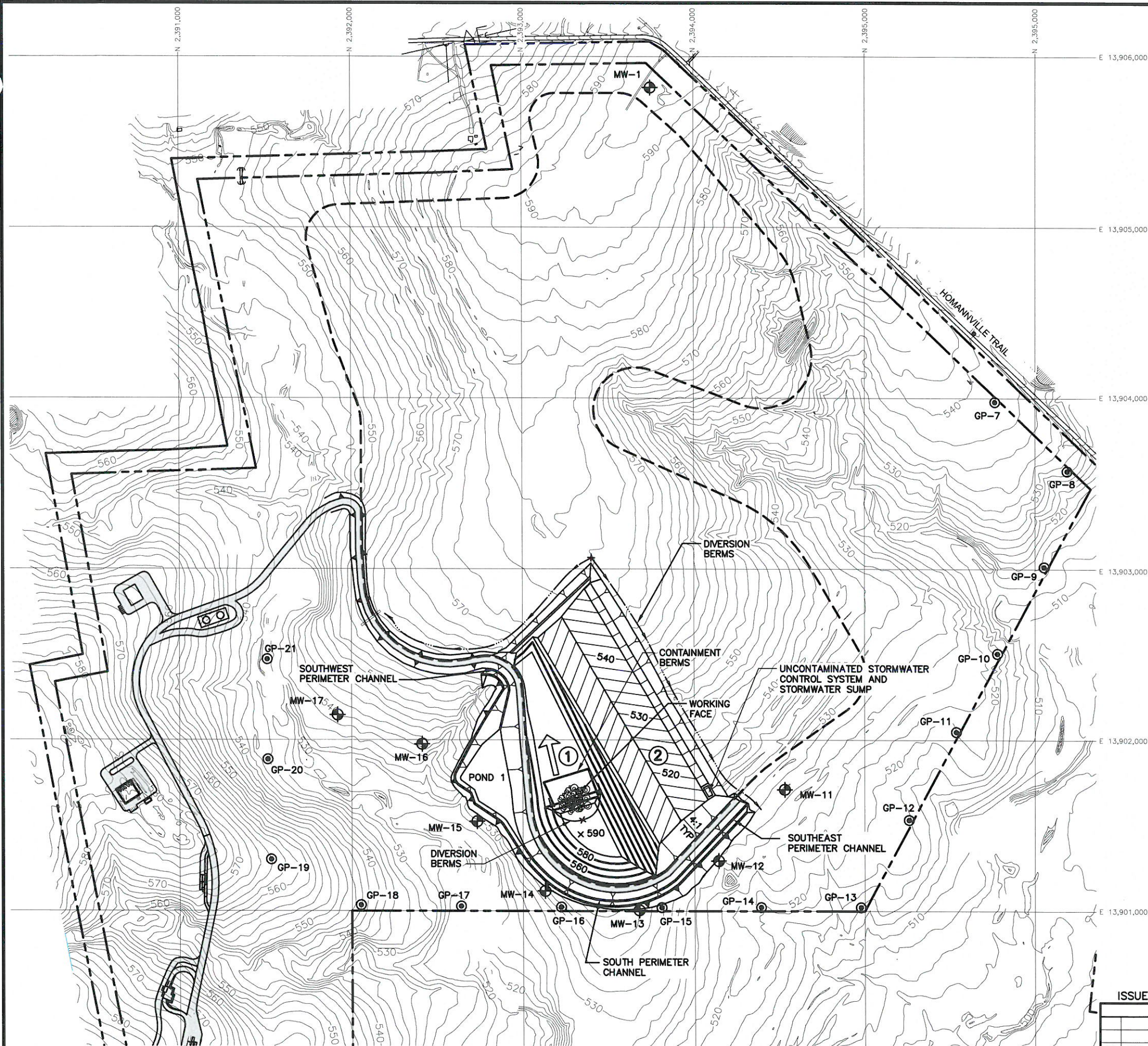
ISSUED FOR PERMITTING PURPOSES ONLY

REVISIONS				TBPG FIRM NO. F-256		TBPG FIRM NO. 50222	
REV	DATE	DESCRIPTION	DWN BY	CHK BY	DATE	SCALE	DRAWING
1	1/14	N.O.D. NO. 1 RESPONSE	GLW	KDM	8/13	GRAPHIC	IIA.14
			DWN BY	CHK BY			

GROUNDWATER AND LANDFILL GAS MONITORING PLAN
130 ENVIRONMENTAL PARK, LLC
130 ENVIRONMENTAL PARK
TYPE I PERMIT APPLICATION

BIGGS & MATHEWS ENVIRONMENTAL CONSULTING ENGINEERS
MANSFIELD • WICHITA FALLS
817-563-1144

J:\129\06 130 Park\102\PART I\IA.15-Cell1Dev.dwg Layout: IIA.15 User: gwhite

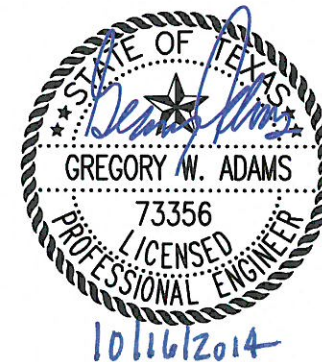


- LEGEND**
- PROPERTY BOUNDARY
 - FACILITY BOUNDARY
 - LANDFILL FOOTPRINT
 - 250' EXISTING CONTOUR
 - N 6753000 STATE PLANE GRID
 - MW-4 MONITORING WELL
 - GP-1 LFG MONITORING PROBE
 - DIRECTION OF FILL
 - 630 x APPROXIMATE TOP OF WASTE SPOT ELEVATION



NOTES:

1. CONTOURS AND ELEVATIONS PROVIDED BY DALLAS AERIAL SERVICE FROM AERIAL PHOTOGRAPHY FLOWN MAY 13, 2013. HORIZONTAL DATUM IS TEXAS STATE PLANE COORDINATE SYSTEM, SOUTH CENTRAL ZONE (NAD 83). ELEVATIONS ARE RELATIVE TO NAVD88 - GEOID 12A.
2. PROPERTY BOUNDARY, FACILITY BOUNDARY, EASEMENT LOCATIONS, AND PERMANENT BENCHMARK PROVIDED BY HODDE & HODDE LAND SURVEYING, INC
3. THE LANDFILL ACCESS AND HAUL ROADS WILL BE SURFACED TO PROVIDE ALL WEATHER ACCESS. ROAD LOCATIONS TO BE DETERMINED DURING SITE OPERATIONS AND LOCATIONS WILL VARY.
4. THE RUN-ON STORMWATER CONTROL SYSTEM WILL CONSIST OF THE PERIMETER DRAINAGE CHANNEL, RUN-ON STORMWATER DIVERSION BERM, AND UNCONTAMINATED STORMWATER SUMP.
5. REFER TO PART III, ATTACHMENT C-DRAINAGE DESIGN REPORT FOR STORMWATER SYSTEMS AND EROSION AND SEDIMENT CONTROL PLAN. REFER TO PART III, ATTACHMENT D6-LEACHATE AND CONTAMINATED WATER MANAGEMENT PLAN FOR CONTAINMENT AND DIVERSION BERM CALCULATIONS.
6. UNCONTAMINATED STORMWATER COLLECTED IN SUMPS WILL BE PERIODICALLY REMOVED FROM EXCAVATED AREAS BY PUMPING TO PERIMETER DRAINAGE CHANNELS OR USED IN SITE OPERATIONS (DUST CONTROL, IRRIGATIONS, ROAD AND LINER CONSTRUCTION).
7. CELL 1 DEVELOPMENT DEPICTS ONGOING WASTE DISPOSAL OPERATIONS IN CELL 1 TO MAXIMUM WASTE FILL ELEVATION. EXCAVATION AND LINER CONSTRUCTION ONGOING IN CELL 2.
8. MONITORING WELLS AND PROBES TO BE INSTALLED AS SHOWN ON DRAWING IIA.14.



ISSUED FOR PERMITTING PURPOSES ONLY

REVISIONS						TBPE FIRM NO. F-256		TBPG FIRM NO. 50222		DRAWING IIA.15
REV	DATE	DESCRIPTION	DWN BY	DES BY	CHK BY	DSN.	KDM	DATE	: 12/13	
						DWN.	GLW	SCALE	: GRAPHIC	
						CHK.	KDM	DWG	: IIA.15-Cell1Dev.dwg	

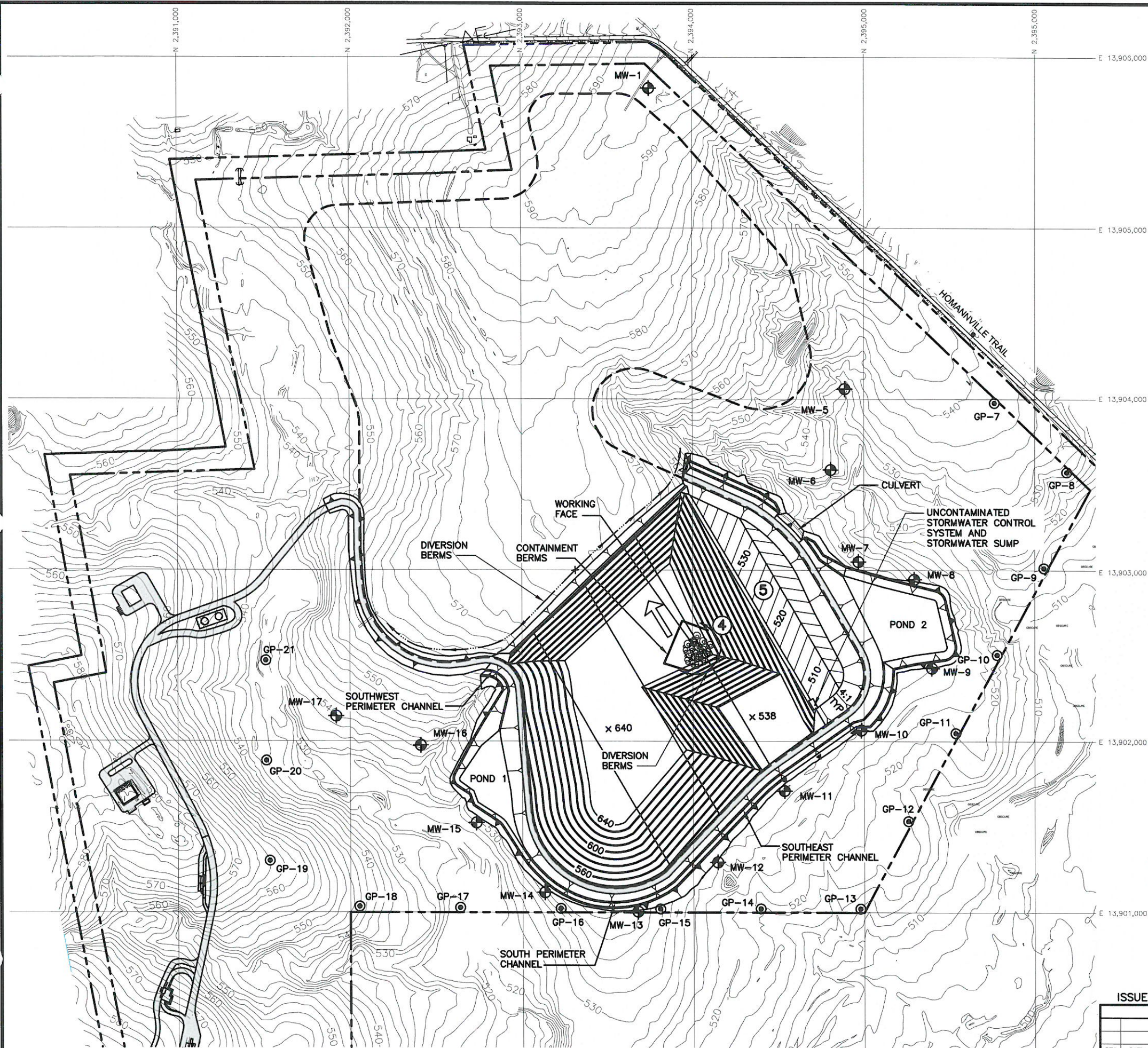
CELL 1 DEVELOPEMENT

130 ENVIRONMENTAL PARK, LLC
130 ENVIRONMENTAL PARK
TYPE I PERMIT APPLICATION



BIGGS & MATHEWS
ENVIRONMENTAL
CONSULTING ENGINEERS

MANFIELD • WICHITA FALLS
817-563-1144

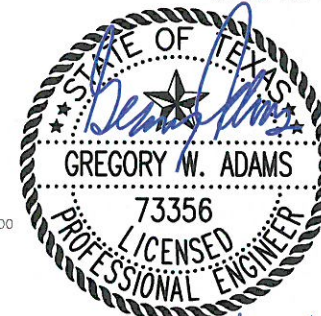


- LEGEND**
- PROPERTY BOUNDARY
 - FACILITY BOUNDARY
 - LANDFILL FOOTPRINT
 - 250 EXISTING CONTOUR
 - N 6753000 STATE PLANE GRID
 - MW-4 MONITORING WELL
 - GP-1 LFG MONITORING PROBE
 - DIRECTION OF FILL
 - 630 x APPROXIMATE TOP OF WASTE SPOT ELEVATION




NOTES:

1. CONTOURS AND ELEVATIONS PROVIDED BY DALLAS AERIAL SERVICE FROM AERIAL PHOTOGRAPHY FLOWN MAY 13, 2013. HORIZONTAL DATUM IS TEXAS STATE PLANE COORDINATE SYSTEM, SOUTH CENTRAL ZONE (NAD 83). ELEVATIONS ARE RELATIVE TO NAVD88 - GEOID 12A.
2. PROPERTY BOUNDARY, FACILITY BOUNDARY, EASEMENT LOCATIONS, AND PERMANENT BENCHMARK PROVIDED BY HODDE & HODDE LAND SURVEYING, INC
3. THE LANDFILL ACCESS AND HAUL ROADS WILL BE SURFACED TO PROVIDE ALL WEATHER ACCESS. ROAD LOCATIONS TO BE DETERMINED DURING SITE OPERATIONS AND LOCATIONS WILL VARY.
4. THE RUN-ON STORMWATER CONTROL SYSTEM WILL CONSIST OF THE PERIMETER DRAINAGE CHANNEL, RUN-ON STORMWATER DIVERSION BERM, AND UNCONTAMINATED STORMWATER SUMP.
5. REFER TO PART III, ATTACHMENT C-DRAINAGE DESIGN REPORT FOR STORMWATER SYSTEMS AND EROSION AND SEDIMENT CONTROL PLAN. REFER TO PART III, ATTACHMENT D6-LEACHATE AND CONTAMINATED WATER MANAGEMENT PLAN FOR CONTAINMENT AND DIVERSION BERM CALCULATIONS.
6. UNCONTAMINATED STORMWATER COLLECTED IN SUMPS WILL BE PERIODICALLY REMOVED FROM EXCAVATED AREAS BY PUMPING TO PERIMETER DRAINAGE CHANNELS OR USED IN SITE OPERATIONS (DUST CONTROL, IRRIGATIONS, ROAD AND LINER CONSTRUCTION).
7. CELL 4 DEVELOPMENT DEPICTS ONGOING WASTE DISPOSAL OPERATIONS IN CELL 4 TO MAXIMUM WASTE FILL ELEVATION. EXCAVATION AND LINER CONSTRUCTION ONGOING IN CELL 5.
8. MONITORING WELLS AND PROBES TO BE INSTALLED AS SHOWN ON DRAWING IIA.14.

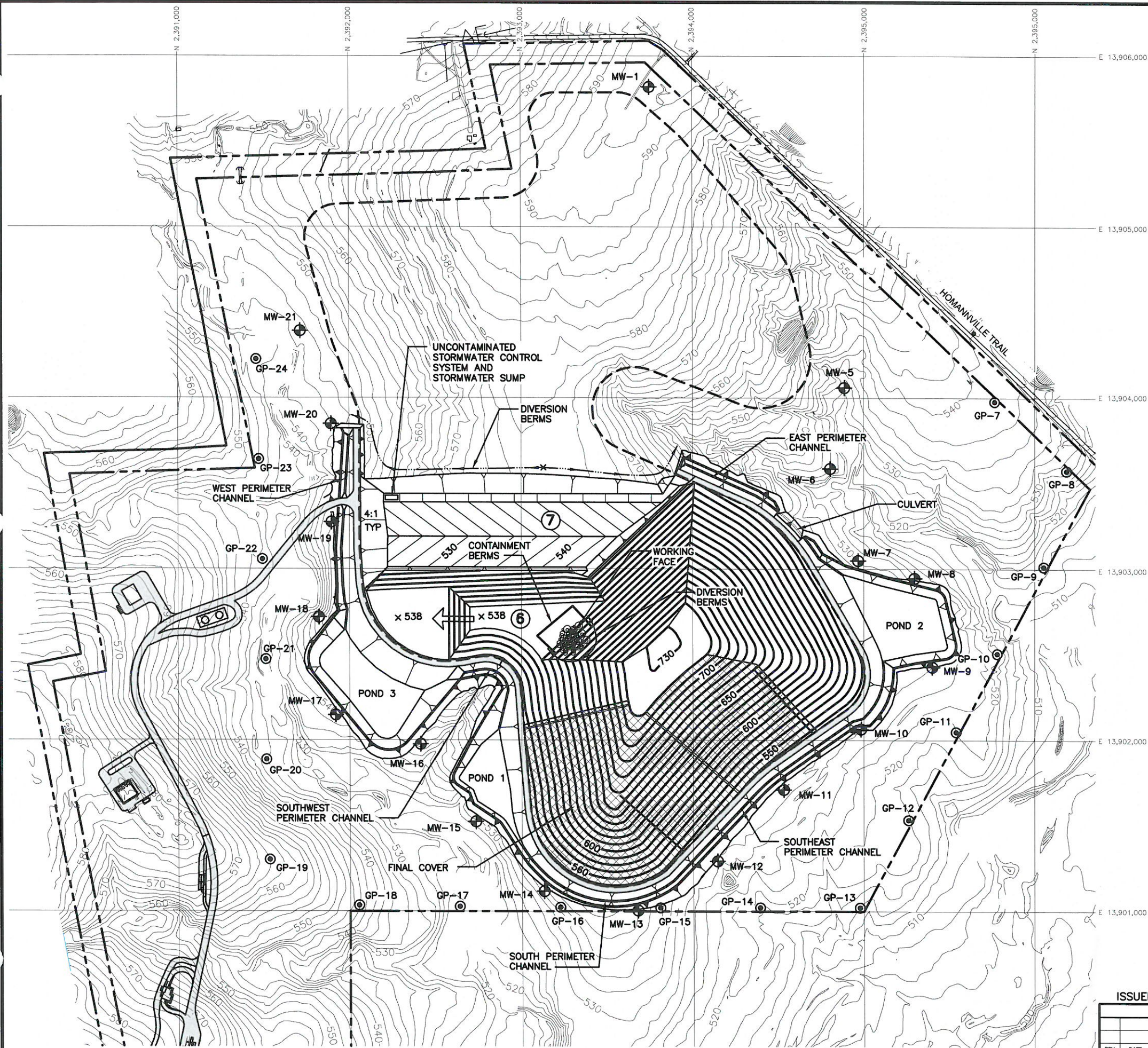


ISSUED FOR PERMITTING PURPOSES ONLY

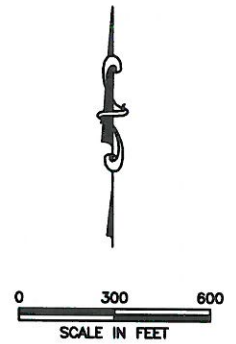
REVISIONS					
REV	DATE	DESCRIPTION	DWN BY	DES BY	CHK BY

CELL 4 DEVELOPMENT		
130 ENVIRONMENTAL PARK, LLC		
130 ENVIRONMENTAL PARK		
TYPE I PERMIT APPLICATION		
 BIGGS & MATHEWS ENVIRONMENTAL CONSULTING ENGINEERS MANSFIELD • WICHITA FALLS 817-563-1144		TBPE FIRM NO. F-256 TBPG FIRM NO. 50222
DSN. KDM DWN. GLW CHK. KDM	DATE : 12/13 SCALE : GRAPHIC DWG : IIA.16-Cell4Dev.dwg	DRAWING IIA.16

J:\129\06 130 Park\102\PART II\IA.17-Cell6Dev.dwg Layout: IIA.17 User: gwhite

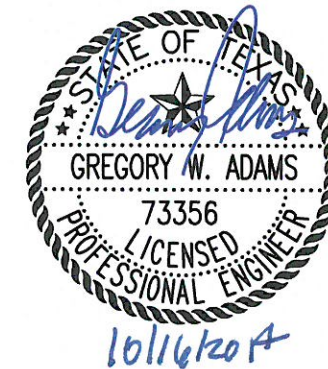


- LEGEND**
- PROPERTY BOUNDARY
 - FACILITY BOUNDARY
 - LANDFILL FOOTPRINT
 - 250 --- EXISTING CONTOUR
 - N 6753000 STATE PLANE GRID
 - MW-4 MONITORING WELL
 - GP-1 LFG MONITORING PROBE
 - DIRECTION OF FILL
 - 630 x APPROXIMATE TOP OF WASTE SPOT ELEVATION



NOTES:

1. CONTOURS AND ELEVATIONS PROVIDED BY DALLAS AERIAL SERVICE FROM AERIAL PHOTOGRAPHY FLOWN MAY 13, 2013. HORIZONTAL DATUM IS TEXAS STATE PLANE COORDINATE SYSTEM, SOUTH CENTRAL ZONE (NAD 83). ELEVATIONS ARE RELATIVE TO NAVD88 - GEOID 12A.
2. PROPERTY BOUNDARY, FACILITY BOUNDARY, EASEMENT LOCATIONS, AND PERMANENT BENCHMARK PROVIDED BY HODDE & HODDE LAND SURVEYING, INC
3. THE LANDFILL ACCESS AND HAUL ROADS WILL BE SURFACED TO PROVIDE ALL WEATHER ACCESS. ROAD LOCATIONS TO BE DETERMINED DURING SITE OPERATIONS AND LOCATIONS WILL VARY.
4. THE RUN-ON STORMWATER CONTROL SYSTEM WILL CONSIST OF THE PERIMETER DRAINAGE CHANNEL, RUN-ON STORMWATER DIVERSION BERM, AND UNCONTAMINATED STORMWATER SUMP.
5. REFER TO PART III, ATTACHMENT C--DRAINAGE DESIGN REPORT FOR STORMWATER SYSTEMS AND EROSION AND SEDIMENT CONTROL PLAN. REFER TO PART III, ATTACHMENT D6--LEACHATE AND CONTAMINATED WATER MANAGEMENT PLAN FOR CONTAINMENT AND DIVERSION BERM CALCULATIONS.
6. UNCONTAMINATED STORMWATER COLLECTED IN SUMPS WILL BE PERIODICALLY REMOVED FROM EXCAVATED AREAS BY PUMPING TO PERIMETER DRAINAGE CHANNELS OR USED IN SITE OPERATIONS (DUST CONTROL, IRRIGATIONS, ROAD AND LINER CONSTRUCTION).
7. CELL 6 DEVELOPMENT DEPICTS ONGOING WASTE DISPOSAL OPERATIONS IN CELL 6 TO MAXIMUM WASTE FILL ELEVATION. EXCAVATION AND LINER CONSTRUCTION ONGOING IN CELL 7.
8. MONITORING WELLS AND PROBES TO BE INSTALLED AS SHOWN ON DRAWING IIA.14.



ISSUED FOR PERMITTING PURPOSES ONLY

REVISIONS						TBPE FIRM NO. F-256		TBPG FIRM NO. 50222	
REV	DATE	DESCRIPTION	DWN BY	DES BY	CHK BY	DSN.	KDM	DATE : 12/13	DRAWING
						DWN.	GLW	SCALE : GRAPHIC	
						CHK.	KDM	DWG : IIA.17-Cell6Dev.dwg	IIA.17

CELL 6 DEVELOPMENT

130 ENVIRONMENTAL PARK, LLC
130 ENVIRONMENTAL PARK
TYPE I PERMIT APPLICATION



BIGGS & MATHEWS
ENVIRONMENTAL
CONSULTING ENGINEERS
MANSFIELD • WCHITA FALLS
817-563-1144