

**130 ENVIRONMENTAL PARK**

**APPENDIX IIA  
MAPS AND DRAWINGS**

## CONTENTS

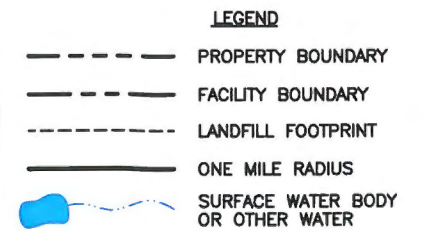
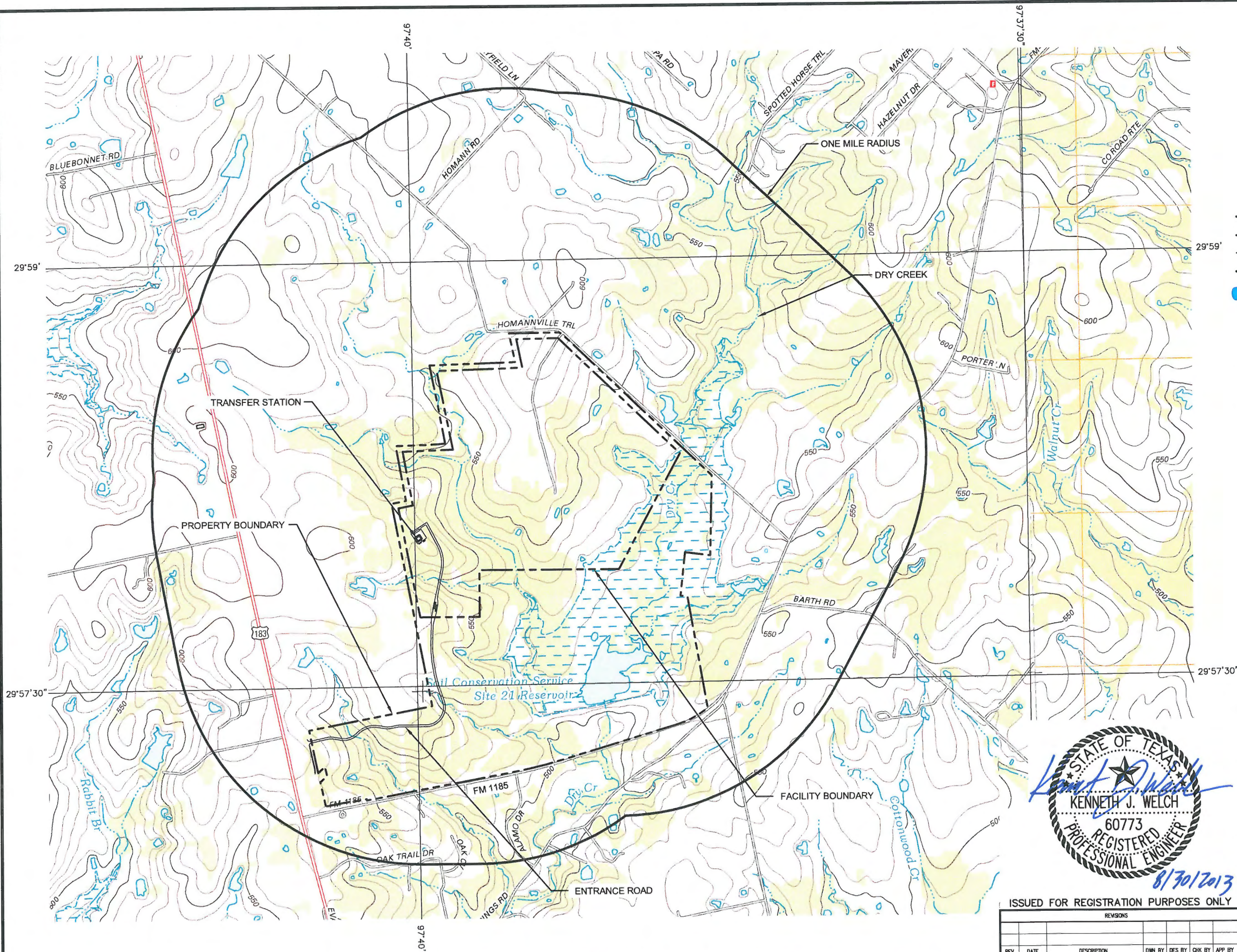
---

IIA.1	Detailed Highway Map
IIA.2	General Topographic Map
IIA.3	General Land Use
IIA.4	Water Well Location Map
IIA.5	Locations of Oil and Gas Wells
IIA.6	Aerial Photograph
IIA.7	General Site Plan
IIA.8	Geologic Vicinity Map
IIA.8A	Geologic Vicinity Map Legend
IIA.9	Flood Insurance Rate Map (FIRM)
IIA.10	Transfer Station Layout
IIA.11	Transfer Station Cross Sections





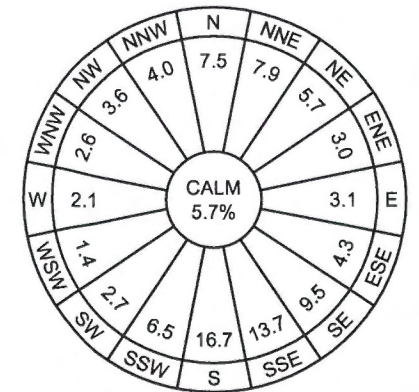
J:\129\06 130 Park\102\PART I\IA.2-GenTopo.dwg Layout: TSIA2 User: gwhite



**NOTE:**

1. TOPOGRAPHIC BASE MAP IS US TOPO 2013 OF 7.5 MINUTE QUADRANGLE LOCKHART NORTH, TX AND DALE, TX DOWNLOADED FROM USGS WEBSITE ON JUNE 10, 2013. IMAGERY DATE IS MAY 2010.

**WIND ROSE**  
SOURCE: TCEQ PUBLIC WIND ROSE ANNUAL 1984-1992



WIND ROSE REPRESENTS AVERAGE PERCENT OF TIME WIND BLOWS FROM EACH OF THE 16 COMPASS POINTS SHOWN.



ISSUED FOR REGISTRATION PURPOSES ONLY

REVISIONS						
REV	DATE	DESCRIPTION	DWN BY	DES BY	CHK BY	APP BY

## GENERAL TOPOGRAPHIC MAP

**130 ENVIRONMENTAL PARK, LLC**  
**130 ENVIRONMENTAL PARK**  
**TYPE V REGISTRATION APPLICATION**

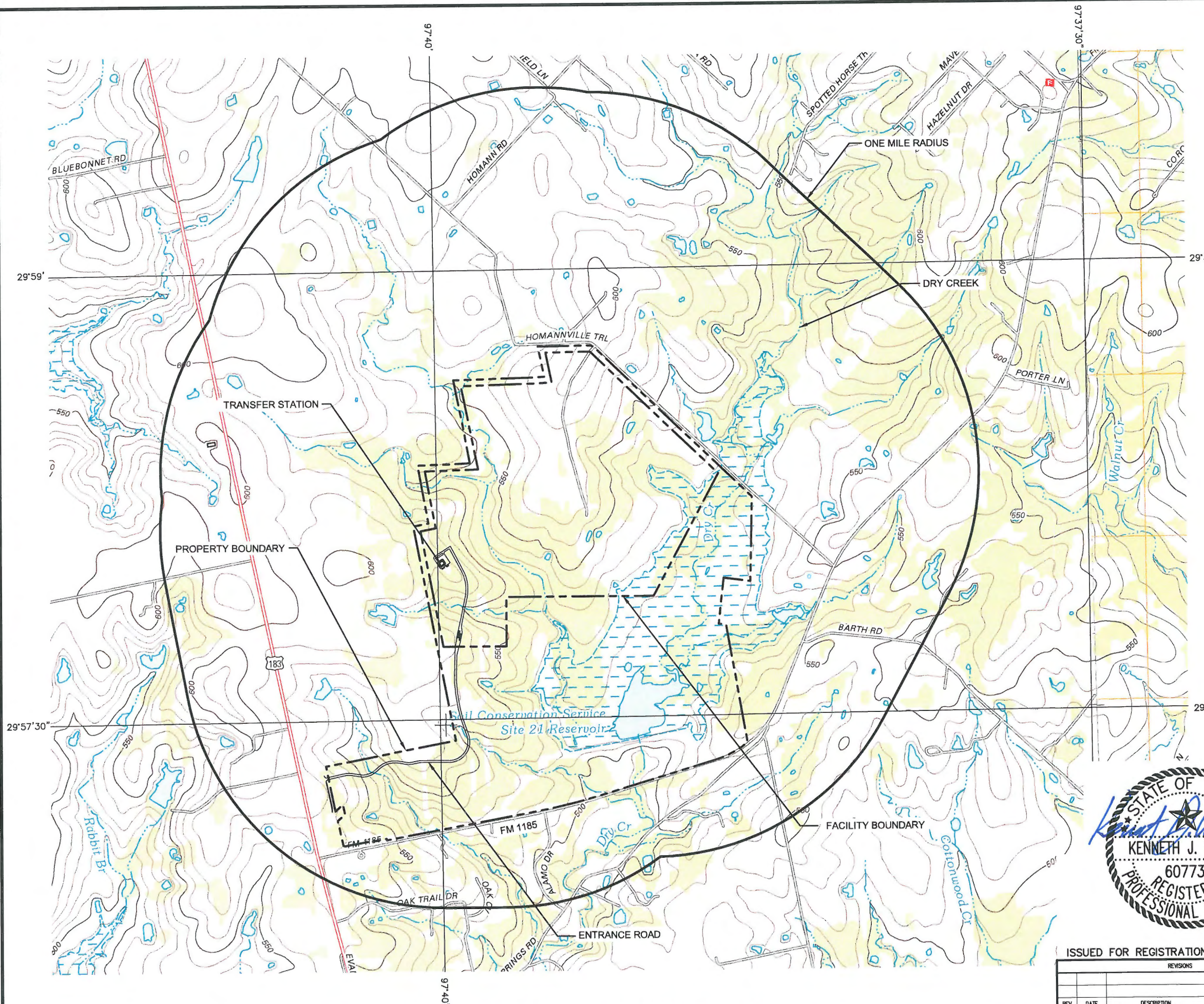


**BIGGS & MATHEWS**  
**ENVIRONMENTAL**  
**CONSULTING ENGINEERS**  
MANSFIELD • WICHITA FALLS  
817-563-1144

TBPE FIRM NO. F-256		TBPG FIRM NO. 50222	
DSN. KJW	DATE : 8/13	DRAWING <b>IIA.2</b>	
DWN. GLW	SCALE : GRAPHIC		
CHK. KJW	DWG : IIA.2-GenTopo.dwg		



\\129\06\129\06\130 Park\102\PART 1\11A.3-GenLandUse.dwg Layout: TSIA3 User: gwhite




- LEGEND**
- PROPERTY BOUNDARY
  - FACILITY BOUNDARY
  - LANDFILL FOOTPRINT
  - ONE MILE RADIUS
  - SURFACE WATER BODY OR OTHER WATER

- NOTES:**
1. TOPOGRAPHIC BASE MAP IS US TOPO 2013 OF 7.5 MINUTE QUADRANGLE LOCKHART NORTH, TX. AND 7.5 MINUTE QUADRANGLE DALE, TX. DOWNLOADED FROM USGS WEBSITE ON JUNE 20, 2013. IMAGERY DATE IS MAY 2010.
  2. REFER TO PART II, APPENDIX IIB - LAND USE ANALYSIS FOR DETAILED LAND USE INFORMATION AND LAND USE MAP. LAND USE ANALYSIS AND MAP HAS BEEN PREPARED BY JOHN WORRALL CONSULTING, LLC.
  3. THERE ARE 126 SINGLE FAMILY RESIDENCES, AND 5 COMMERCIAL AND INDUSTRIAL BUSINESSES WITHIN ONE MILE THE FACILITY BOUNDARY.
  4. THERE ARE NO SCHOOLS, DAYCARE CENTERS, HOSPITALS, CHURCHES, OR CEMETERIES RECREATIONAL FACILITIES WITHIN ONE MILE OF THE FACILITY BOUNDARY.
  5. THERE ARE NO OTHER COMMERCIAL OR BUSINESS ESTABLISHMENTS WITHIN ONE MILE OF THE FACILITY BOUNDARY.
  6. THERE ARE NO CEMETERIES, HISTORICALLY SIGNIFICANT SITES, NO ARCHAEOLOGICALLY SIGNIFICANT SITES, AND NO SITES HAVING EXCEPTIONAL AESTHETIC QUALITY WITHIN ONE MILE OF THE FACILITY BOUNDARY. REFER TO PART II, APPENDIX IIF - CULTURAL RESOURCES SURVEY PREPARED BY AR CONSULTANTS, INC.
  7. REFER TO DRAWING IIA.7-GENERAL SITE PLAN FOR DRAINAGE, PIPELINE, AND UTILITY EASEMENTS WITHIN THE FACILITY BOUNDARY.
  8. THERE ARE NO INTAKE/DISCHARGE STRUCTURES LOCATED WITHIN OR ASSOCIATED WITH THE FACILITIES.
  9. THERE ARE NO WASTE DISPOSAL ACTIVITIES WITHIN THE FACILITY BOUNDARY THAT ARE NOT INCLUDED IN THIS FACILITY APPLICATION.



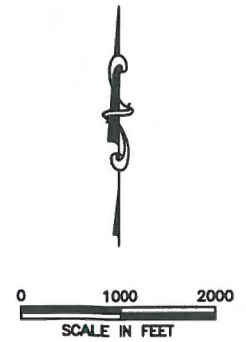
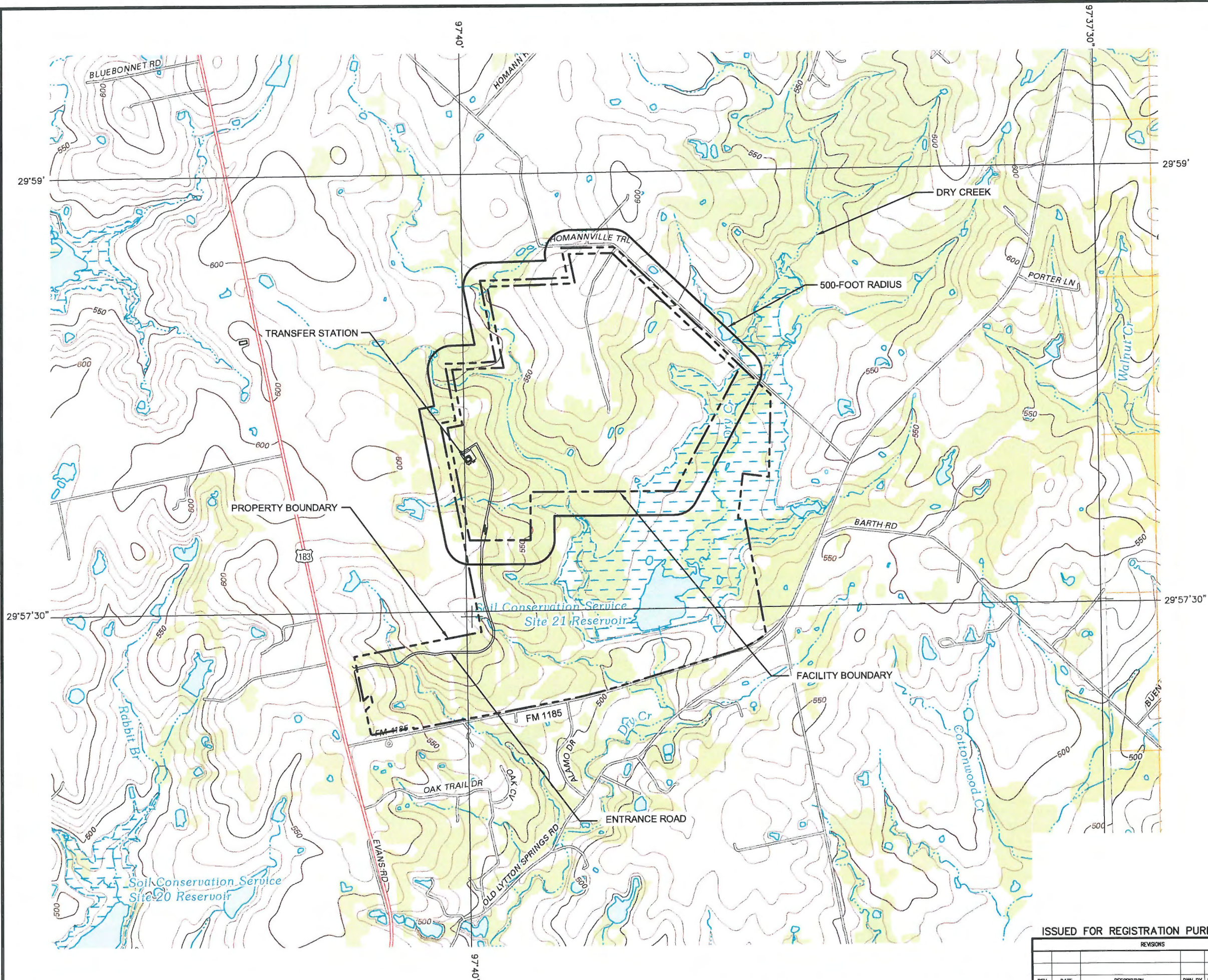
ISSUED FOR REGISTRATION PURPOSES ONLY

REVISIONS						
REV	DATE	DESCRIPTION	DWN BY	DES BY	CHK BY	APP BY

<b>GENERAL LAND USE</b>	
<b>130 ENVIRONMENTAL PARK, LLC</b>	
<b>130 ENVIRONMENTAL PARK</b>	
<b>TYPE V REGISTRATION APPLICATION</b>	
	<b>BIGGS &amp; MATHEWS</b> ENVIRONMENTAL CONSULTING ENGINEERS MANSFIELD • WICHITA FALLS 817-563-1144
TSBP FIRM NO. F-256	TSBP FIRM NO. 50222
DSN. KJW	DATE : 8/13
DWN. GLW	SCALE : GRAPHIC
CHK. KJW	DWG : IIA.3-GenLandUse.dwg
DRAWING	
<b>IIA.3</b>	



J:\129\06 130 Park\102\PART I\IA.4-WaterWells.dwg Layout: TSIA4 User: gwhite



- LEGEND**
- PROPERTY BOUNDARY
  - FACILITY BOUNDARY
  - 500 FOOT RADIUS
  - SURFACE WATER BODY OR OTHER WATER

**NOTES:**

- TOPOGRAPHIC BASE MAP IS US TOPO 2013 OF 7.5 MINUTE QUADRANGLE LOCKHART NORTH, TX. AND 7.5 MINUTE QUADRANGLE DALE, TX. DOWNLOADED FROM USGS WEBSITE ON JUNE 21, 2013. IMAGRY DATED MAY 2010.
- THERE ARE NO KNOWN WATER WELLS WITHIN 500 FEET OF THE PROPOSED FACILITY BOUNDARY.



**WATER WELL LOCATION MAP**

**130 ENVIRONMENTAL PARK, LLC  
130 ENVIRONMENTAL PARK  
TYPE V REGISTRATION APPLICATION**



**BIGGS & MATHEWS  
ENVIRONMENTAL  
CONSULTING ENGINEERS**  
MANSFIELD • WICHITA FALLS  
817-563-1144

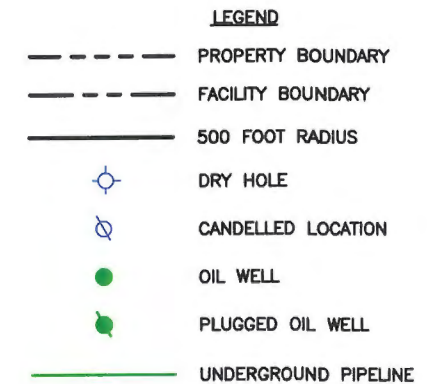
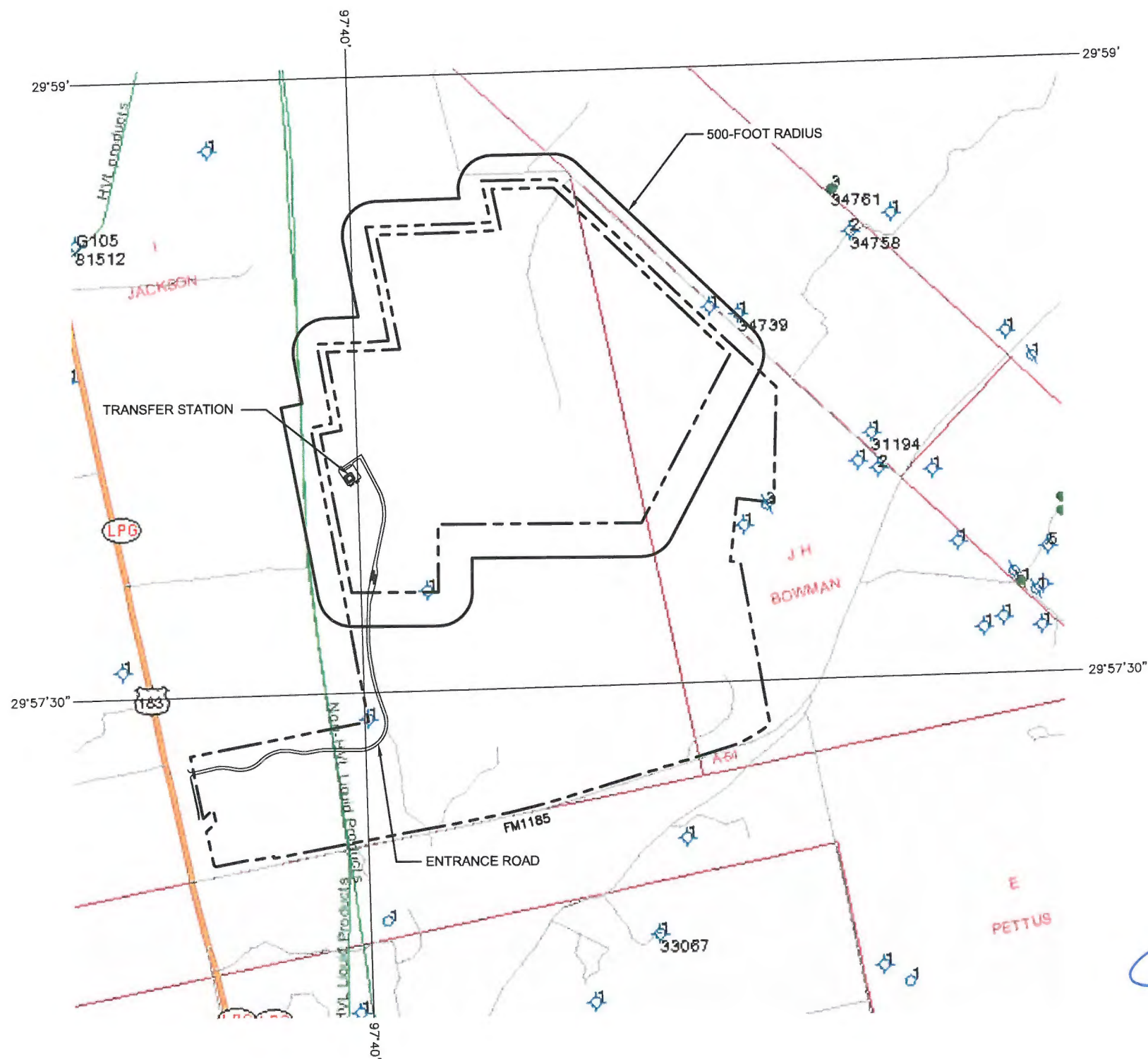
ISSUED FOR REGISTRATION PURPOSES ONLY

REVISIONS							TBPE FIRM NO. F-256		TBPG FIRM NO. 50222	
							DSN. JMS	DATE : 8/13		DRAWING  <b>IIA.4</b>
							DWN. GLW	SCALE : GRAPHIC		
							CHK. JMS	DWG : IIA.4--WaterWells.dwg		
REV	DATE	DESCRIPTION	DWN BY	DES BY	CHK BY	APP BY				

**IIA.4**



J:\129\06 130 Park\102\PART I\IA.5-Oil-GasWells.dwg Layout: TSIA5 User: gwhite



**NOTES:**

1. BASE MAP FROM RAILROAD COMMISSION ONLINE VIEWER DATED JUNE 20, 2013.
2. BOUNDARY, TRANSFER STATION FOOTPRINT, AND 500 FOOT RADIUS LINES ARE APPROXIMATE.
3. OIL AND GAS WELL INFORMATION WAS SEARCHED USING THE RAILROAD COMMISSION OF TEXAS VIEWER ON JUNE 4, 2013.
4. THERE ARE NO PRODUCING WELLS WITHIN 500 FEET OF THE FACILITY BOUNDARY OR WITHIN THE FACILITY BOUNDARY.
5. THERE ARE 3 DRY HOLES LOCATED WITHIN 500 FEET OF THE FACILITY BOUNDARY.



**LOCATIONS OF OIL AND GAS WELLS**

**130 ENVIRONMENTAL PARK, LLC**  
**130 ENVIRONMENTAL PARK**  
**TYPE V REGISTRATION APPLICATION**



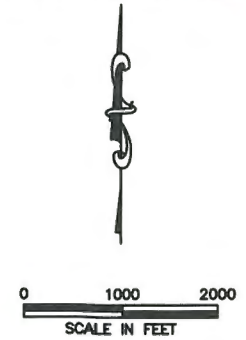
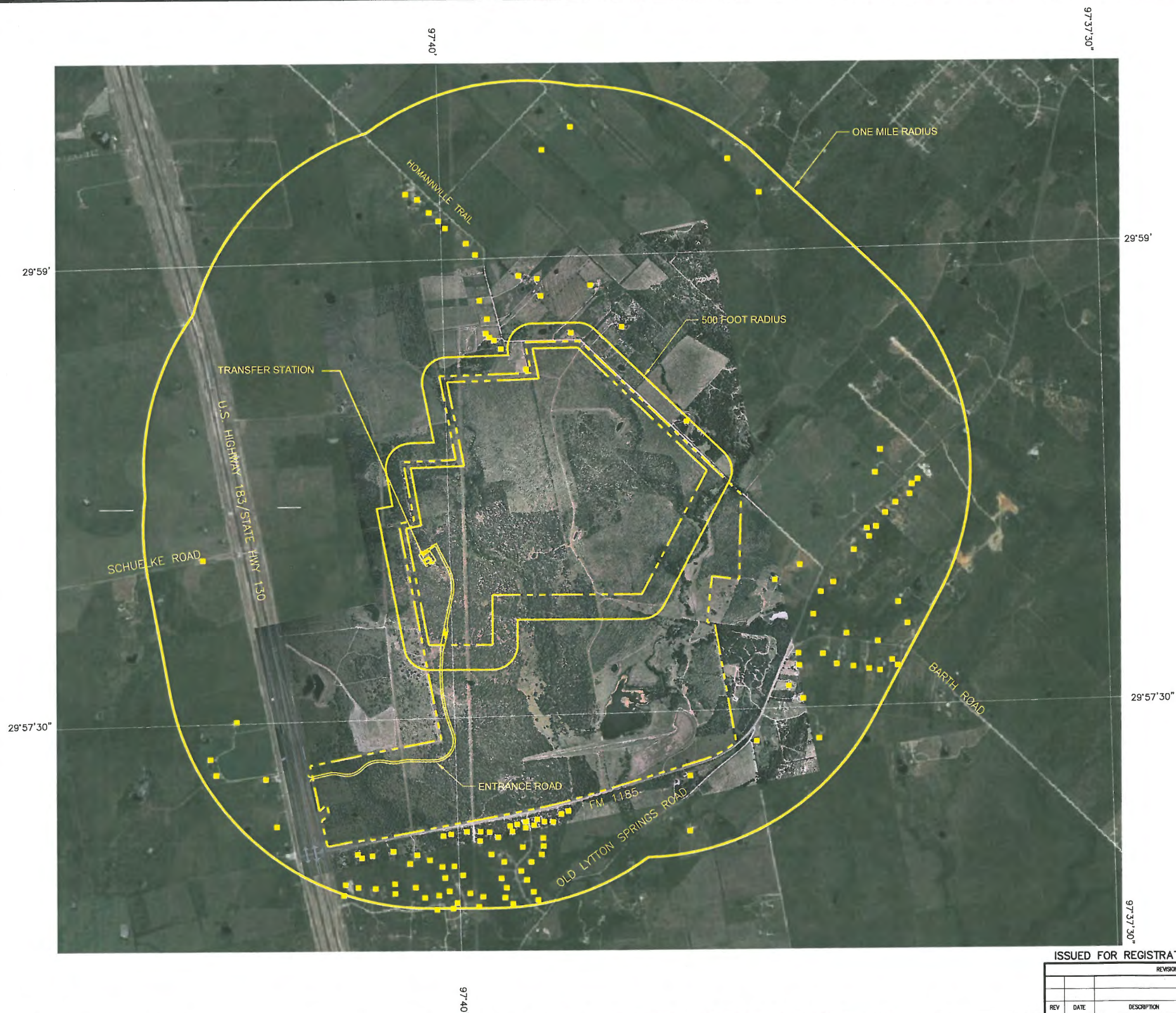
**BIGGS & MATHEWS**  
**ENVIRONMENTAL**  
**CONSULTING ENGINEERS**  
MANSFIELD • WICHITA FALLS  
817-563-1144

ISSUED FOR REGISTRATION PURPOSES ONLY

REVISIONS							TBPE FIRM NO. F-256		TBPG FIRM NO. 50222		DRAWING  <b>IIA.5</b>
							DSN. JMS	DATE : 8/13			
							DWN. GLW	SCALE : GRAPHIC			
REV	DATE	DESCRIPTION	DWN BY	DES BY	CHK BY	APP BY	CHK. JMS	DWG : IIA.5-Oil-GasWells.dwg			



J:\129\06 130 Park\102\PART 1\IA.7-AerialPhoto.dwg Layout: TSI\AS User: gwhite



LEGEND	
<span style="border-bottom: 2px dashed yellow; width: 50px; display: inline-block;"></span>	PROPERTY BOUNDARY
<span style="border-bottom: 2px dashed yellow; width: 50px; display: inline-block;"></span>	FACILITY BOUNDARY
<span style="border-bottom: 2px dashed yellow; width: 50px; display: inline-block;"></span>	LANDFILL FOOTPRINT
<span style="color: yellow;">■</span>	HABITABLE STRUCTURE


- NOTES:
1. AERIAL PHOTOGRAPH OF SITE PROVIDED BY DALLAS AERIAL SERVICE FROM AERIAL PHOTOGRAPHY FLOWN MAY 13, 2013. AERIAL PHOTOGRAPH OF AREA SURROUNDING THE SITE FROM GOOGLE MAP IMAGERY DATE 8-1-12.
  2. REFER TO PART II, APPENDIX IIB-LAND USE ANALYSIS FOR DETAILED LAND USE INFORMATION. LAND USE MAP AND GENERAL CHARACTER OF AREAS ADJACENT TO THE FACILITY AS PREPARED BY JOHN WORRALL CONSULTING L.L.C..
  3. GENERAL CHARACTER OF AREAS WITHIN ONE MILE OF THE FACILITY BOUNDARY PROVIDED BY JOHN WORRALL CONSULTING L.L.C..

GENERAL CHARACTER	
LAND USE	PERCENT
OPEN	93.30%
RESIDENTIAL	4.90%
WATER BODIES	1.50%
COMMERCIAL/INDUSTRIAL	0.30%
	100%



**AERIAL PHOTOGRAPH**

**130 ENVIRONMENTAL PARK, LLC**  
**130 ENVIRONMENTAL PARK**  
**TYPE V REGISTRATION APPLICATION**

**BIGGS & MATHEWS**  
ENVIRONMENTAL  
CONSULTING ENGINEERS  
MANSFIELD • WICHITA FALLS  
817-563-1144

ISSUED FOR REGISTRATION PURPOSES ONLY

REVISIONS							TBPE FIRM NO. F-256		TBPG FIRM NO. 50222		DRAWING  <b>IIA.6</b>
							DSN. KJW	DATE : 8/13			
							DWN. GLW	SCALE : GRAPHIC			
REV	DATE	DESCRIPTION	DWN BY	DES BY	CHK BY	APP BY	CHK. KJW	DWG : IIA.7-AerialPhoto.dwg			

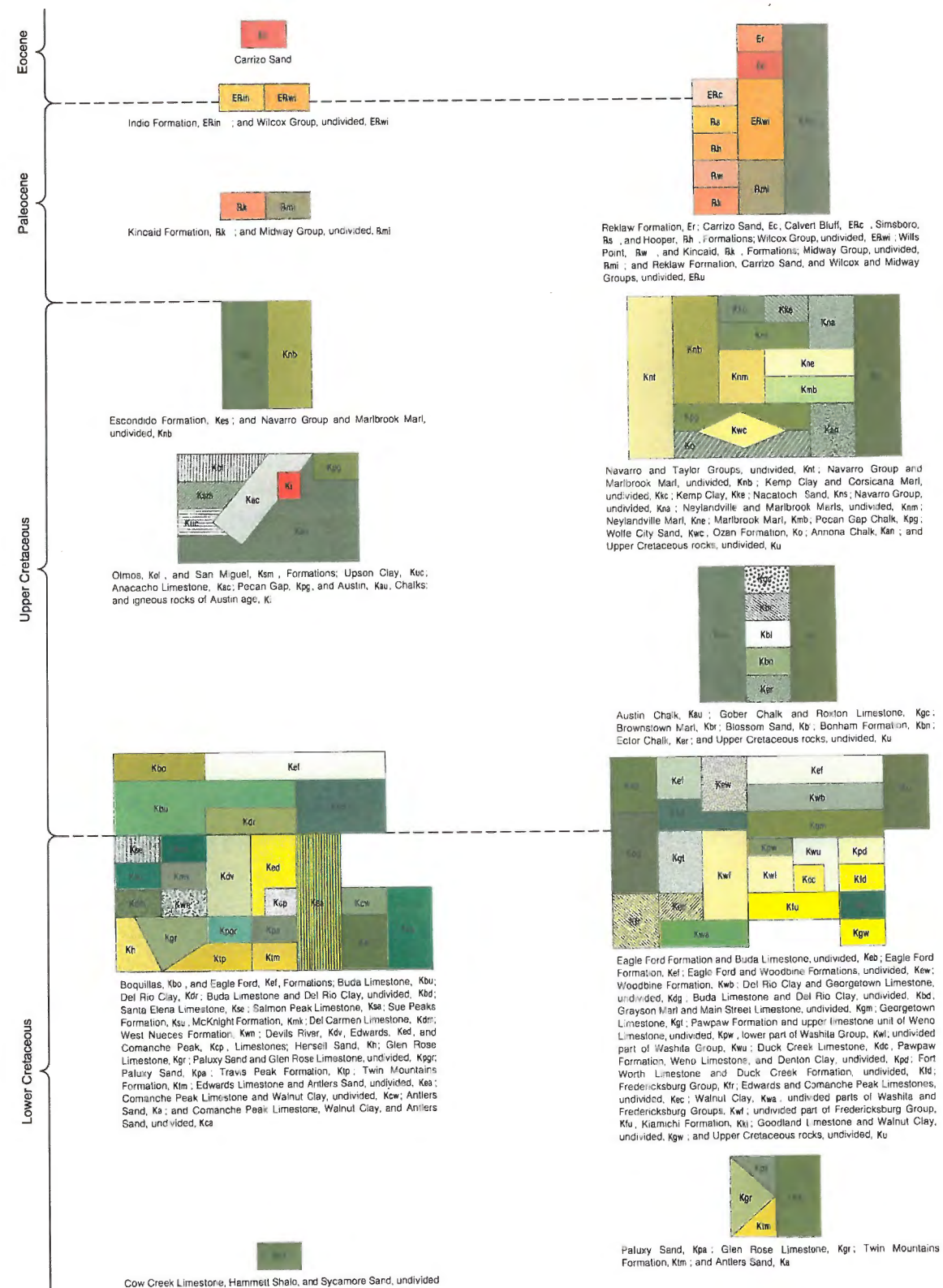
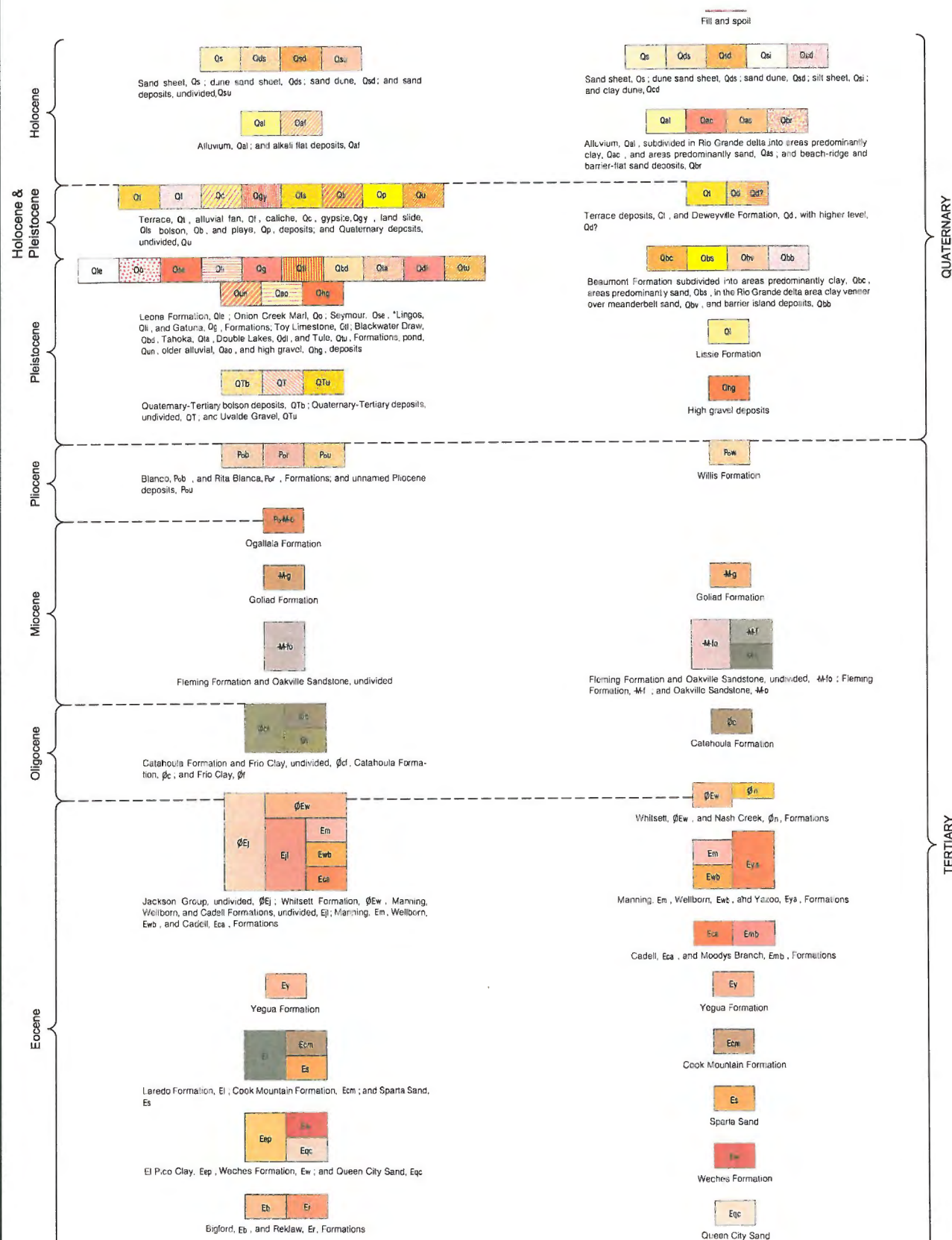












CRETACEOUS



### GEOLOGIC VICINITY MAP LEGEND

130 ENVIRONMENTAL PARK, LLC  
130 ENVIRONMENTAL PARK  
TYPE V REGISTRATION APPLICATION



**BIGGS & MATHEWS**  
**ENVIRONMENTAL**  
**CONSULTING ENGINEERS**  
MANSFIELD • WICHITA FALLS  
817-563-1144

ISSUED FOR REGISTRATION PURPOSES ONLY

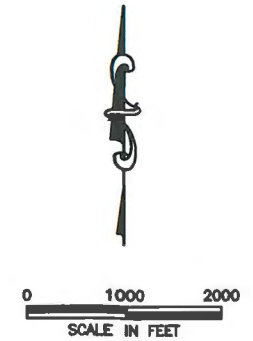
REVISIONS							TBPE FIRM NO. F-256		TBPG FIRM NO. 50222		DRAWING  <b>IIA.8A</b>
							DSN. JMS    DATE : 8/13				
							DWN. GLW    SCALE : GRAPHIC				
REV	DATE	DESCRIPTION			DWN BY	DES BY	CHK BY	APP BY	CHK. JMS    DWG : IIA.9-GeoVicinity.dwg		

# GEOLOGIC MAP OF TEXAS

1992



J:\129\06 130 Park\102\PART II\IA.11--FIRM.dwg Layout: TSIA9 User: gwhite



## LEGEND

SPECIAL FLOOD HAZARD AREAS (SFHAs) SUBJECT TO INUNDATION BY THE 1% ANNUAL CHANCE FLOOD

The 1% annual chance flood (100-year flood), also known as the base flood, is the flood that has a 1% chance of being equaled or exceeded in any given year. The Special Flood Hazard Area is the area subject to flooding by the 1% annual chance flood. Areas of Special Flood Hazard include Zones A, AE, AH, AO, AR, A99, V and VE. The Base Flood Elevation is the water-surface elevation of the 1% annual chance flood.

- ZONE A** No Base Flood Elevations determined.
- ZONE AE** Base Flood Elevations determined.
- ZONE AH** Flood depths of 1 to 3 feet (usually areas of ponding); Base Flood Elevations determined.
- ZONE AO** Flood depths of 1 to 3 feet (usually sheet flow on sloping terrain); average depths determined. For areas of alluvial fan flooding, velocities also determined.
- ZONE AR** Special Flood Hazard Area formerly protected from the 1% annual chance flood by a flood control system that was subsequently decertified. Zone AR indicates that the former flood control system is being restored to provide protection from the 1% annual chance or greater flood.
- ZONE A99** Area to be protected from 1% annual chance flood by a Federal flood protection system under construction; no Base Flood Elevations determined.
- ZONE V** Coastal flood zone with velocity hazard (wave action); no Base Flood Elevations determined.
- ZONE VE** Coastal flood zone with velocity hazard (wave action); Base Flood Elevations determined.

FLOODWAY AREAS IN ZONE AE

The floodway is the channel of a stream plus any adjacent floodplain areas that must be kept free of encroachment so that the 1% annual chance flood can be carried without substantial increases in flood heights.

OTHER FLOOD AREAS

**ZONE X** Areas of 0.2% annual chance flood; areas of 1% annual chance flood with average depths of less than 1 foot or with drainage areas less than 1 square mile; and areas protected by levees from 1% annual chance flood.

--- PROPERTY BOUNDARY

--- FACILITY BOUNDARY

**CALDWELL COUNTY  
UNINCORPORATED AREAS  
480094**



### NOTE:

- THIS MAP HAS BEEN COMPILED FROM FEMA FLOOD INSURANCE RATE MAPS (FIRM) OF CALDWELL COUNTY, TEXAS AND UNINCORPORATED AREAS COMMUNITY PANELS:

48055C0125E EFFECTIVE DATE: 6-19-2012

ISSUED FOR REGISTRATION PURPOSES ONLY

REVISIONS						
REV	DATE	DESCRIPTION	DWN BY	DES BY	CHK BY	APP BY

**FLOOD INSURANCE RATE MAP  
(FIRM)**

**130 ENVIRONMENTAL PARK, LLC  
130 ENVIRONMENTAL PARK  
TYPE V REGISTRATION APPLICATION**



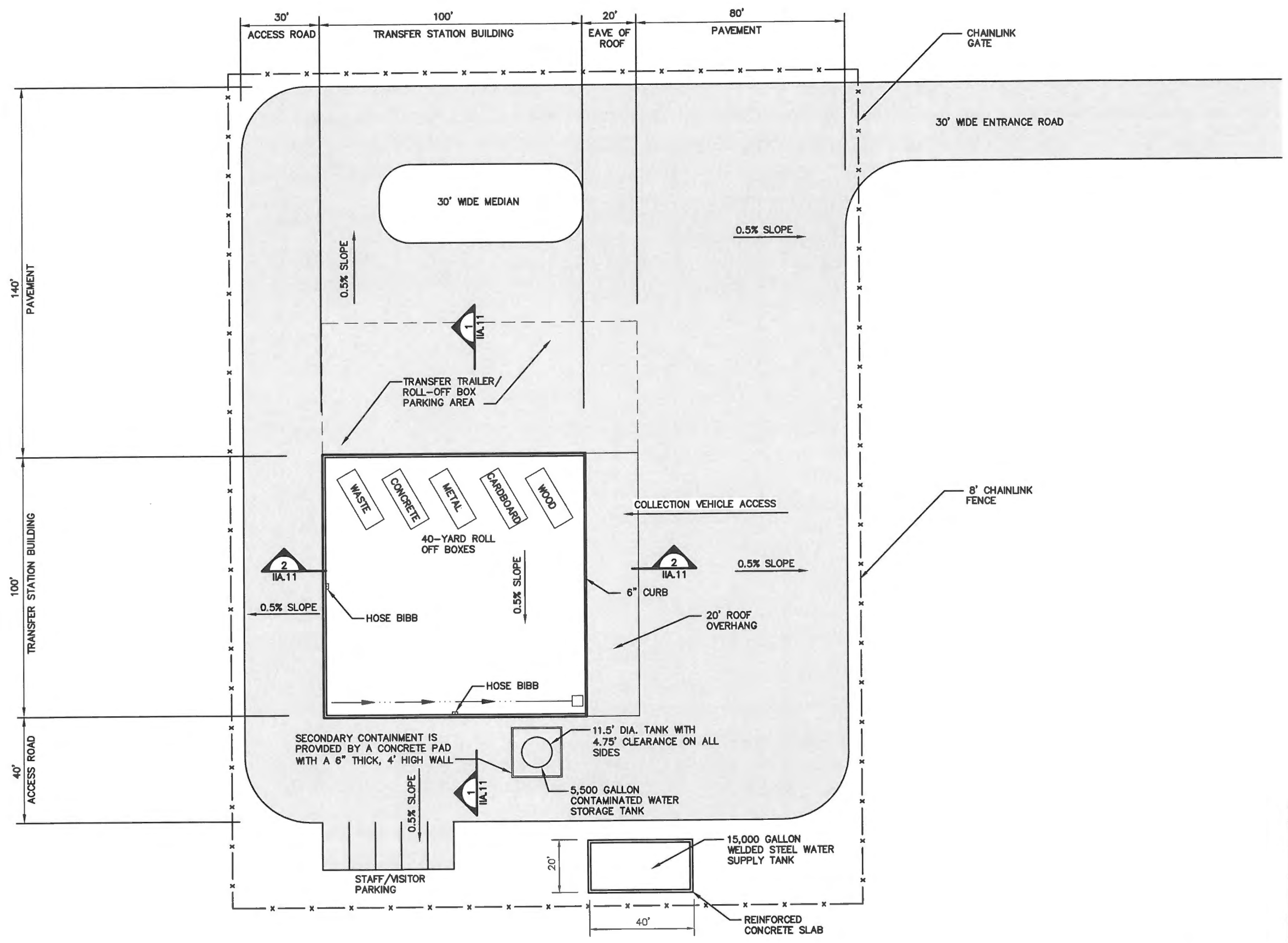
**BIGGS & MATHEWS  
ENVIRONMENTAL  
CONSULTING ENGINEERS**


MANSFIELD • WICHITA FALLS  
817-563-1144

TBPE FIRM NO. F-256		TBPG FIRM NO. 50222	
DSN. KJW	DATE : 8/13	DRAWING	
DWN. GLW	SCALE : GRAPHIC	IIA.9	
CHK. KJW	DWG : IIA.11-FIRM.dwg		



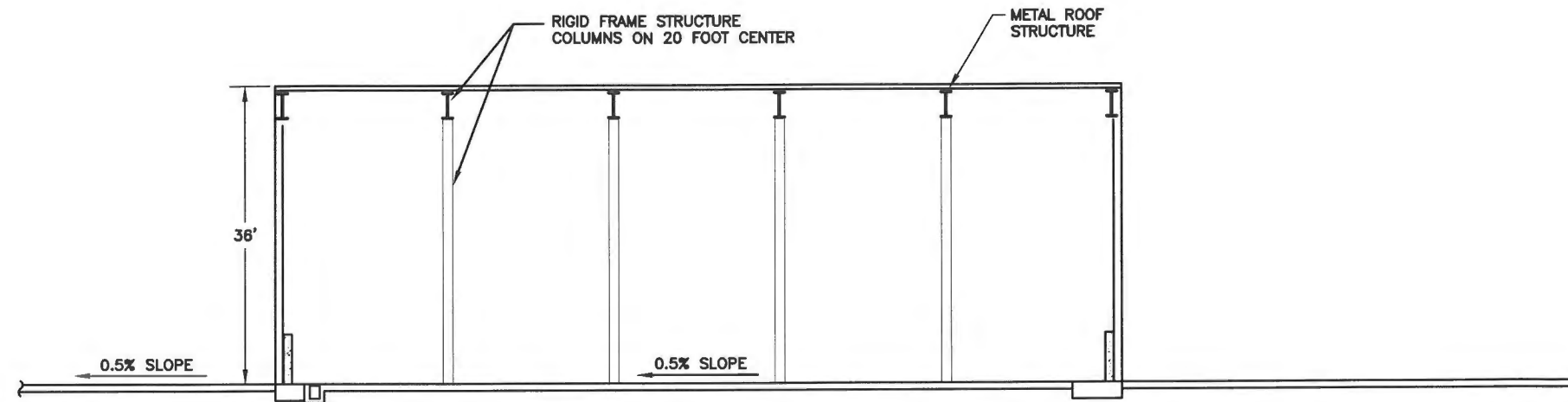
J:\129\06 130 Park\102\PART III\IIB.2\_TSLO.dwg Layout: TSIA10 User: gwhite



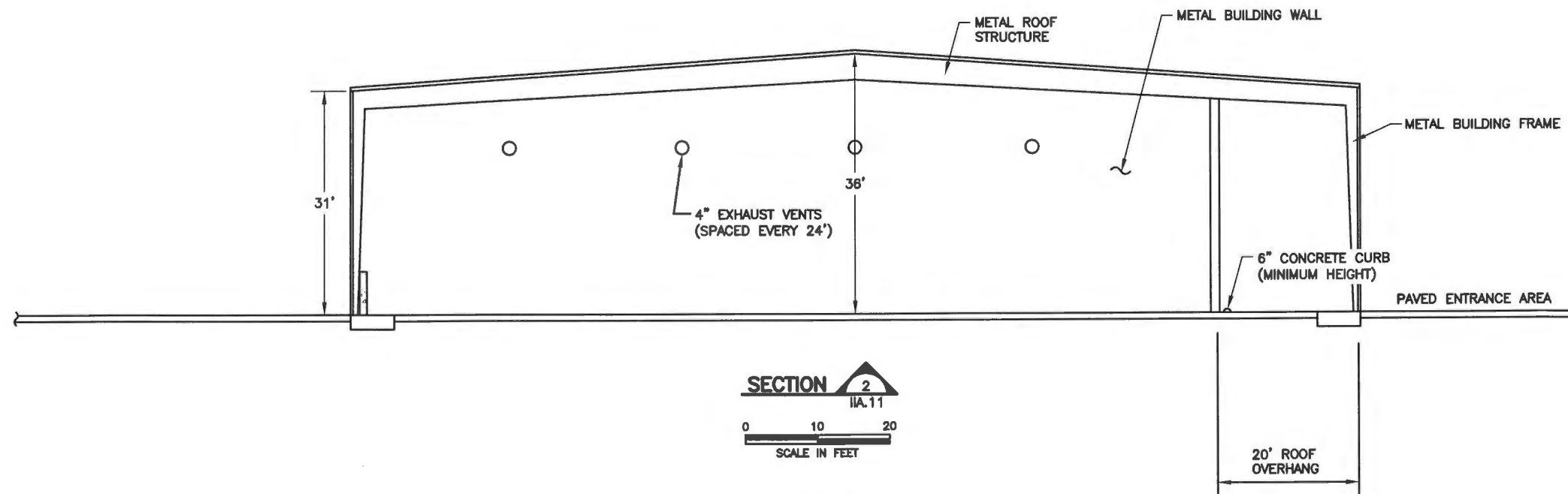
<b>TRANSFER STATION LAYOUT</b>	
<b>130 ENVIRONMENTAL PARK, LLC</b> <b>130 ENVIRONMENTAL PARK</b> <b>TYPE V REGISTRATION APPLICATION</b>	
	<b>BIGGS &amp; MATHEWS</b> ENVIRONMENTAL CONSULTING ENGINEERS MANSFIELD • WICHITA FALLS 817-563-1144
ISSUED FOR REGISTRATION PURPOSES ONLY	
TBPE FIRM NO. F-256      TBPG FIRM NO. 50222	
DSN. JHP      DATE : 8/13      DRAWING	
DWN. GLW      SCALE : GRAPHIC <b>IIA.10</b>	
CHK. KJW      DWG : IIB.2_TSLO.dwg	



J:\129\06 130 Park\102\PART III\IA.13-BuildSecs.dwg Layout: TSIA.11 User: gwhite



SECTION 1  
IIA.11  
0 10 20  
SCALE IN FEET



SECTION 2  
IIA.11  
0 10 20  
SCALE IN FEET



TRANSFER STATION  
CROSS SECTIONS  
130 ENVIRONMENTAL PARK, LLC  
130 ENVIRONMENTAL PARK  
TYPE V REGISTRATION APPLICATION



BIGGS & MATHEWS  
ENVIRONMENTAL  
CONSULTING ENGINEERS  
MANSFIELD • WICHITA FALLS  
817-563-1144

ISSUED FOR REGISTRATION PURPOSES ONLY

ISSUED FOR REVISION PURPOSES ONLY							TBPE FIRM NO. F-256		TBPG FIRM NO. 50222		DRAWING   <
-----------------------------------	--	--	--	--	--	--	---------------------	--	---------------------	--	--