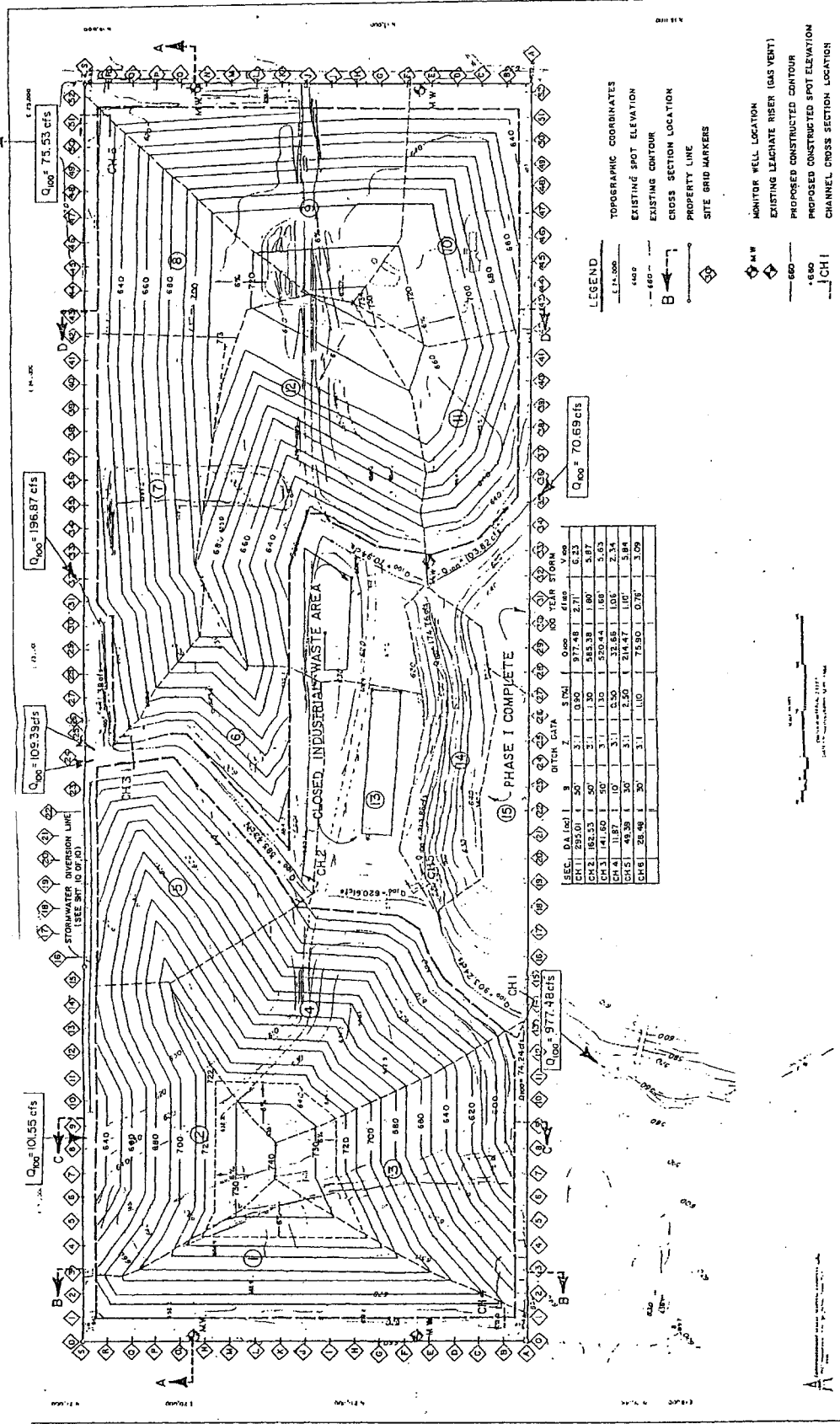


Appendix 2



SECT.	D.A. (ft)	B	Z	S (ft)	DITCH DATA	Q ₁₀₀	100 YEAR STORM	V (ft)
CH 1	825.01	50'	3.1	0.90	977.48	2.71	6.23	
CH 2	825.53	50'	3.1	1.30	985.38	1.80	5.87	
CH 3	41.60	50'	3.1	1.30	520.44	1.80	5.85	
CH 4	11.87	10'	3.1	1.30	314.87	1.00	5.84	
CH 5	48.38	50'	3.1	1.30	74.80	0.76	3.09	
CH 6	28.48	50'	3.1	1.10	74.80	0.76	3.09	

PROJECT: AUSTIN COMMUNITY LANDFILL
 COUNTY: TRAVIS COUNTY, TEXAS
 SHEET NO.: 10
 DATE: 11/10/01
 DRAWN BY: [Name]
 CHECKED BY: [Name]
 PLOTTED BY: [Name]

DEVELOPED SURFACE WATER PLAN
 PITTSMAN ENGINEERING
 1408 WETHER
 AUSTIN, TEXAS 78704
 SHEET 3 OF 10

LEGEND
 TOPOGRAPHIC COORDINATES
 EXISTING SPOT ELEVATION
 EXISTING CONTOUR
 CROSS SECTION LOCATION
 PROPERTY LINE
 SITE GRID MARKERS
 MONITOR WELL LOCATION
 EXISTING LEACHATE RISER (GAS VENT)
 PROPOSED CONSTRUCTED CONTOUR
 PROPOSED CONSTRUCTED SPOT ELEVATION
 CHANNEL CROSS SECTION LOCATION

Q₁₀₀ = 109.33 cfs
 Q₁₀₀ = 196.87 cfs
 Q₁₀₀ = 75.53 cfs
 Q₁₀₀ = 70.69 cfs

100 YEAR STORM	AREA (AC)	1	2	3	4	5	6	7	8	9	10	11	12	13	14	15
1	15.46	40.5	51.3	58.0	62.0	65.0	67.0	68.0	69.0	70.0	71.0	72.0	73.0	74.0	75.0	76.0
2	15.46	40.5	51.3	58.0	62.0	65.0	67.0	68.0	69.0	70.0	71.0	72.0	73.0	74.0	75.0	76.0
3	15.46	40.5	51.3	58.0	62.0	65.0	67.0	68.0	69.0	70.0	71.0	72.0	73.0	74.0	75.0	76.0
4	15.46	40.5	51.3	58.0	62.0	65.0	67.0	68.0	69.0	70.0	71.0	72.0	73.0	74.0	75.0	76.0
5	15.46	40.5	51.3	58.0	62.0	65.0	67.0	68.0	69.0	70.0	71.0	72.0	73.0	74.0	75.0	76.0
6	15.46	40.5	51.3	58.0	62.0	65.0	67.0	68.0	69.0	70.0	71.0	72.0	73.0	74.0	75.0	76.0
7	15.46	40.5	51.3	58.0	62.0	65.0	67.0	68.0	69.0	70.0	71.0	72.0	73.0	74.0	75.0	76.0
8	15.46	40.5	51.3	58.0	62.0	65.0	67.0	68.0	69.0	70.0	71.0	72.0	73.0	74.0	75.0	76.0
9	15.46	40.5	51.3	58.0	62.0	65.0	67.0	68.0	69.0	70.0	71.0	72.0	73.0	74.0	75.0	76.0
10	15.46	40.5	51.3	58.0	62.0	65.0	67.0	68.0	69.0	70.0	71.0	72.0	73.0	74.0	75.0	76.0
11	15.46	40.5	51.3	58.0	62.0	65.0	67.0	68.0	69.0	70.0	71.0	72.0	73.0	74.0	75.0	76.0
12	15.46	40.5	51.3	58.0	62.0	65.0	67.0	68.0	69.0	70.0	71.0	72.0	73.0	74.0	75.0	76.0
13	15.46	40.5	51.3	58.0	62.0	65.0	67.0	68.0	69.0	70.0	71.0	72.0	73.0	74.0	75.0	76.0
14	15.46	40.5	51.3	58.0	62.0	65.0	67.0	68.0	69.0	70.0	71.0	72.0	73.0	74.0	75.0	76.0
15	15.46	40.5	51.3	58.0	62.0	65.0	67.0	68.0	69.0	70.0	71.0	72.0	73.0	74.0	75.0	76.0

NOTES
 1. IN ACCORDANCE WITH TEXAS DEPARTMENT OF HEALTH REGULATION NO. 324.602 (c), GRID MARKERS WILL BE SPACED ALONG SITE BOUNDARIES AT 100 FOOT STATIONS. THESE MARKERS WILL BE INSTALLED TO ENCOMPASS THE CURRENT FILL AREAS AND THE AREAS TO BE FILLED WITHIN A THREE YEAR PERIOD AND EXPANDED PROGRESSIVELY AS NEEDED.
 2. DESIGN SLOPES SHOWN ARE CONSTRUCTION GRADES. SHEET B DEPICTS ANTICIPATED FINAL SLOPES AFTER SETTLEMENT.